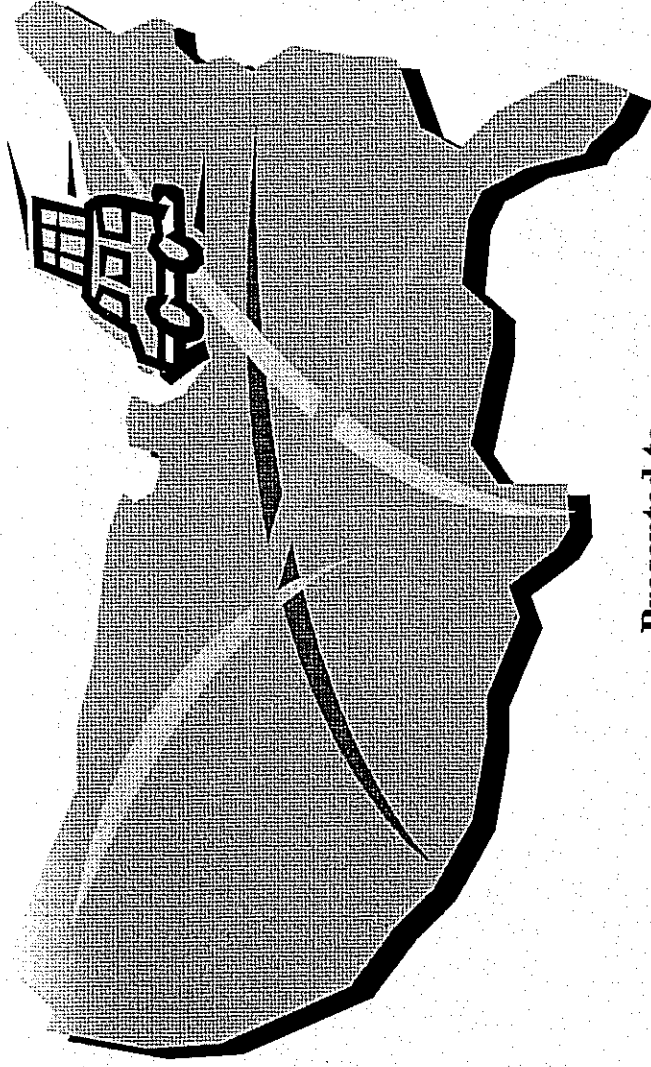


COMPARATIVE DATA REPORT ON STATE TRANSPORTATION PROGRAMS



Presented to
Fiscal Affairs and Government Operations Committee
Southern Legislative Conference
Council of State Governments
October 2001

Robert Weiss
Fiscal Research Division
North Carolina General Assembly

INTRODUCTION

The sixteen states of the Southern Legislative Conference (SLC):

- are home to 37% of the nation's people,
- have 38% of the nation's licensed drivers,
- have 36% of the nation's registered motor vehicles, and
- account for 41% of the nation's Vehicle Miles Traveled (VMT).

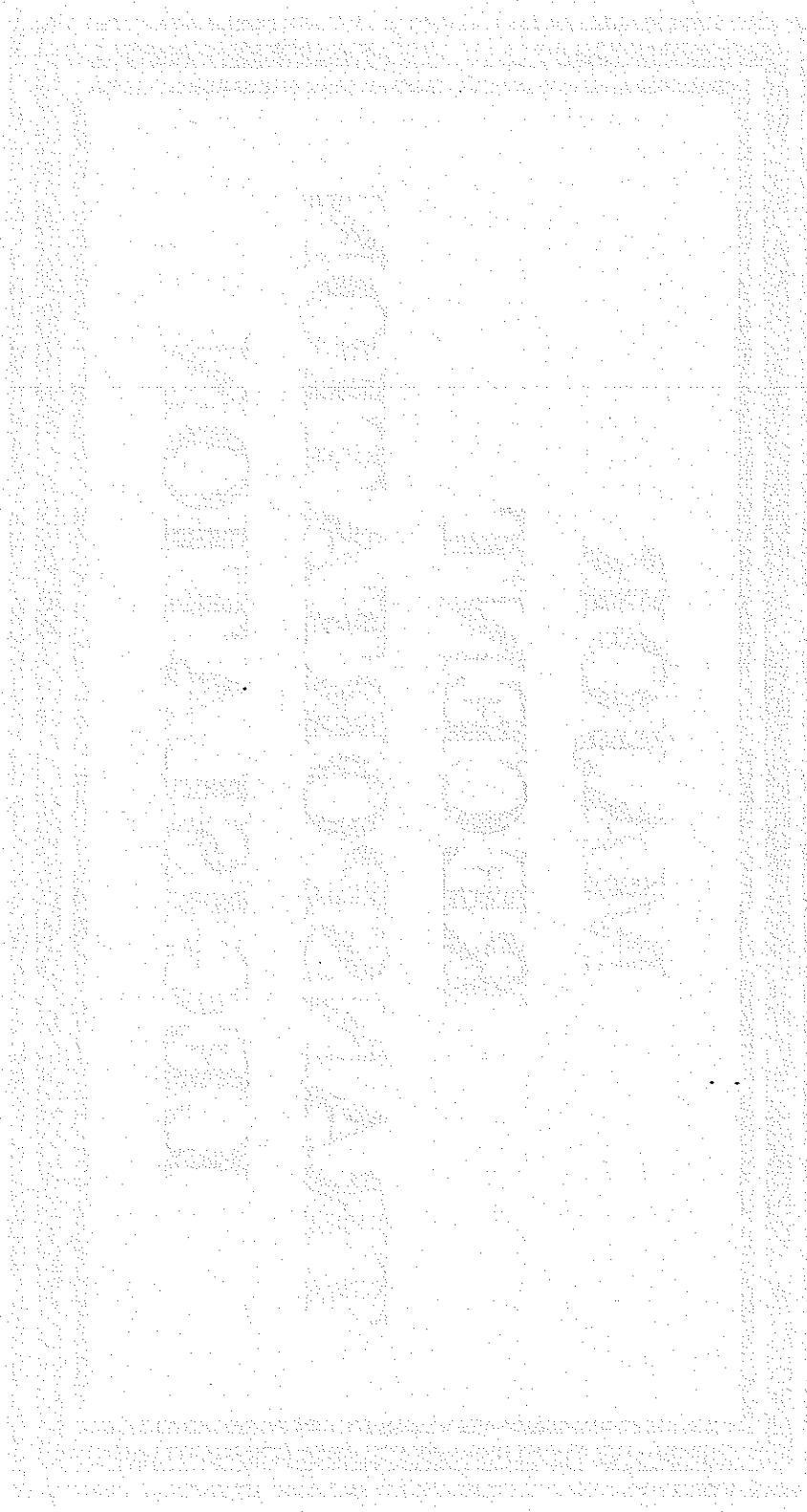
About 30% of the South's roads are state controlled, compared to 20% for the nation. The South is more dependent on user taxes and fees but less dependent on tolls and bonds.

In nine SLC states, the Governor appoints the Secretary or Director of the Department of Transportation. In six of those states, this appointment is confirmed by the legislature. In ten states the DOT agency head works with a board or commission, usually appointed by the Governor.

TABLE OF CONTENTS

Major Recent Transportation Legislation	1
Quick Facts.....	5
State Rankings.....	23
Administration.....	33
State Highway Finance.....	41
Fuel Taxes	45
Public Transportation	49
Bridges	53
Fatalities	57

MAJOR RECENT TRANSPORTATION LEGISLATION



MAJOR RECENT TRANSPORTATION LEGISLATION

Louisiana

- Created the Louisiana Transportation Authority and authorized it to impose tolls and issue bonds not backed by the State's full faith and credit.
- Authorized electronic advertisement and receipt of bids for transportation projects.
- Adopts .08% blood alcohol level effective September 30, 2003.

Missouri

- Lowered permissible blood alcohol level to .08 and brought repeat DWI offender law into compliance with federal requirements.
- Prohibited MoDOT from contracting with private entities for rest area operation.

North Carolina

- Directed NCDOT to use cash flow financing to fund highway construction projects.
- Allowed \$680 million in cash in the State's Highway Trust Fund to be used for maintenance, public transportation, and other uses.
- Required either a social security number or IRS Individual Taxpayer Identification Number to obtain a driver license.

Oklahoma

- Abolished annual motor vehicles safety inspections.
- Passed legislation to promote alternative fuel use and development.
- Passed legislation to aid counties with the costs associated with road maintenance.

South Carolina

- Required that children five and under be secured in vehicle child safety seats.
- Prohibited hunting from highway right-of-way.
- Relaxed vehicle size and weight limitations for vehicles responding to a declared state of emergency.

Tennessee

- Increased speed limits on controlled access highways with four or more lanes from 65 to 70 mph and established minimum speed of 55 mph on controlled access highways with four or more lanes.
- Required department of safety, instead of revenue, to collect registration taxes, highway user fuel tax, and penalties from overweight certified weighers.

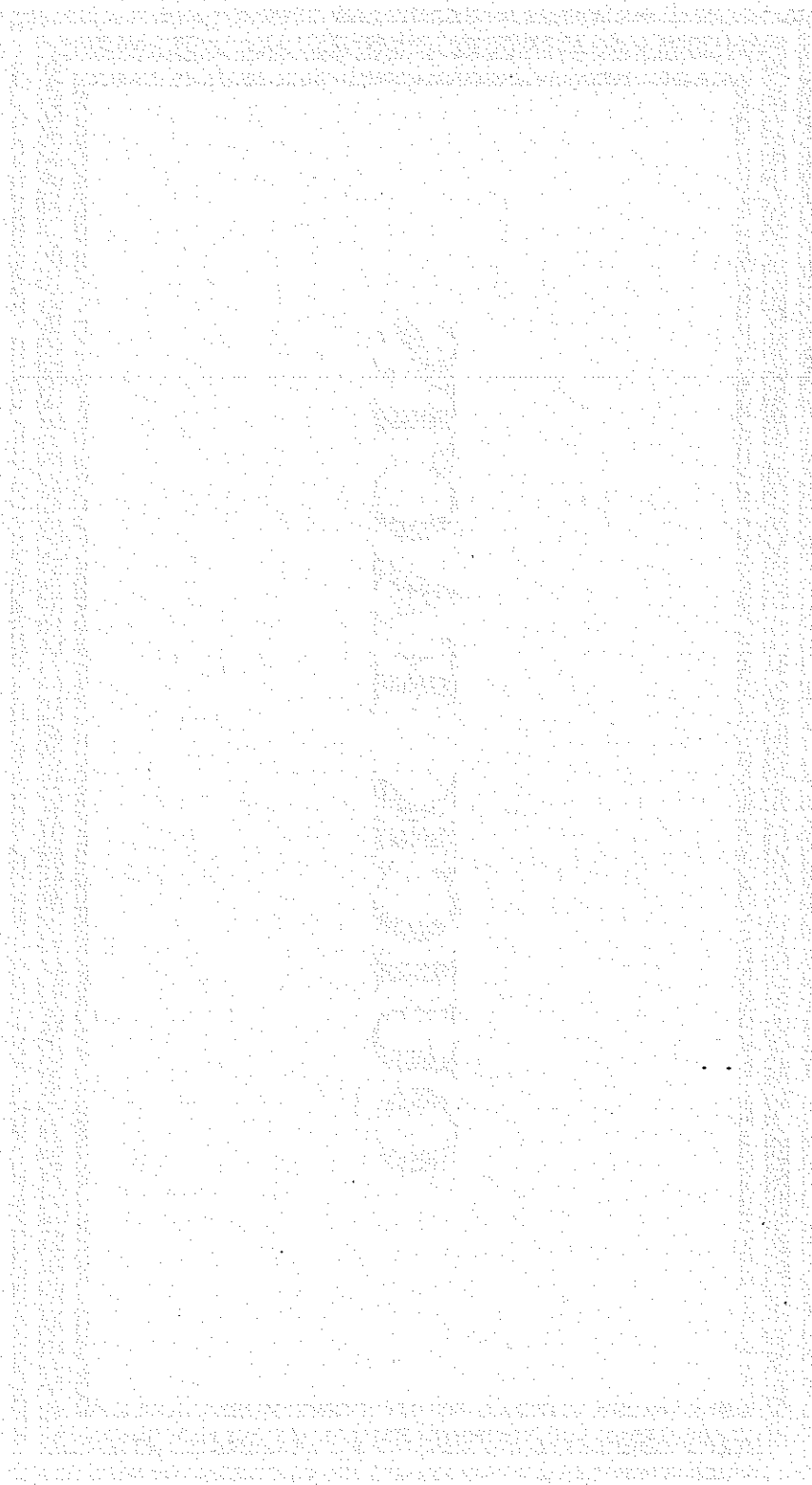
Texas

- Created the Texas Mobility Fund, subject to approval of the voters, to allow the sale of bonds to advance the construction of major transportation projects. Also allowed the Texas Transportation Commission to create Regional Mobility Authorities to build and operate new toll projects.
- Brought state law into compliance with federal law on open containers of alcohol and repeat DWI offenders.
- Allowed TxDOT and TTA to use photographic technology for enforcement of toll violations.
- Established an Abandoned Rail Program.
- Authorized TxDOT to pay a fee to satisfy environmental mitigation requirements and to contract with additional resource entities for management of mitigation sites.

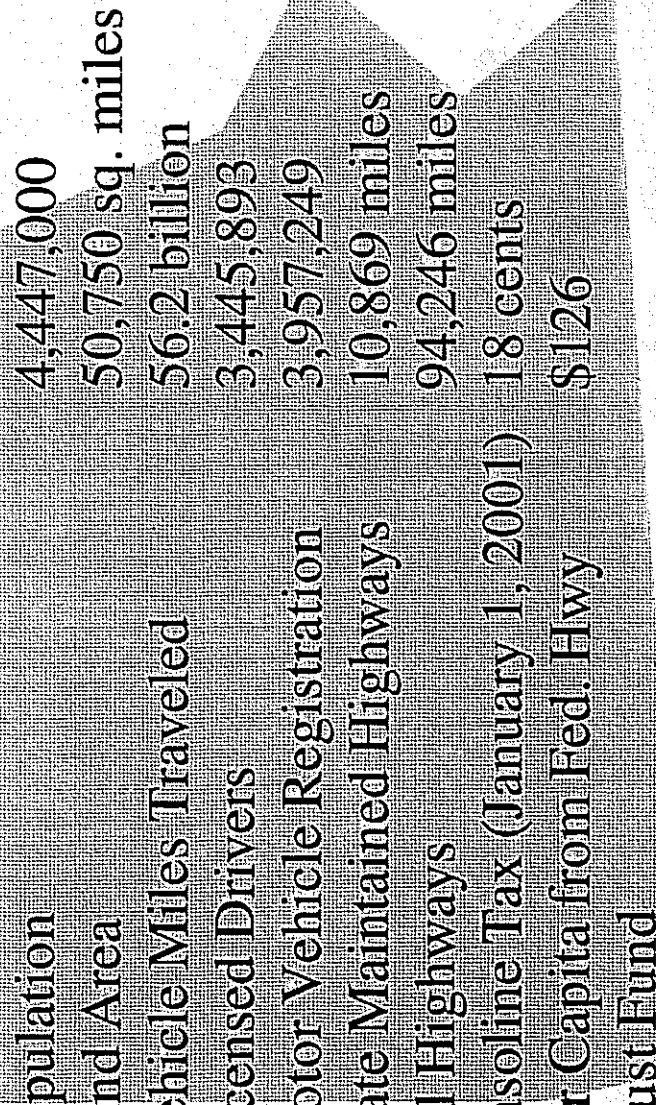
Virginia

- Allowed counties to resume the responsibility and accountability for any portion of the planning, construction, maintenance, and/or operations for all, or a portion of their state secondary system.
- Required the Commonwealth Transportation Board to develop a statewide transportation plan with a 20-year horizon and update that plan at least every five years. This plan supersedes the assessment of highway needs every five years by the Virginia Department of Transportation.

QUICK FACTS

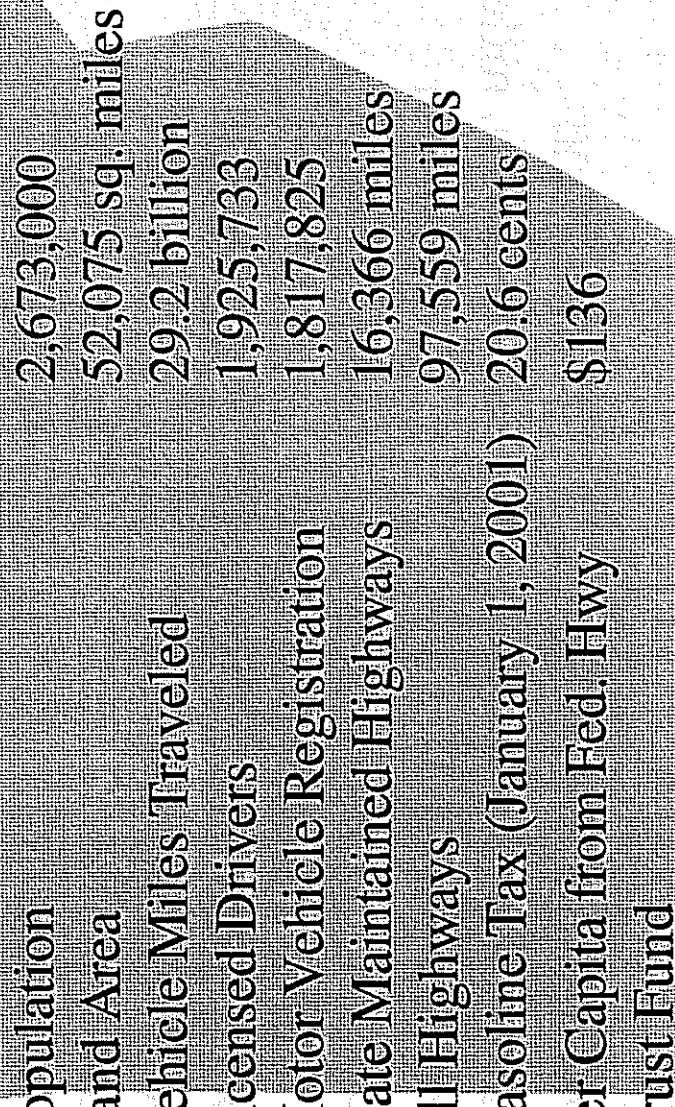


Alabama



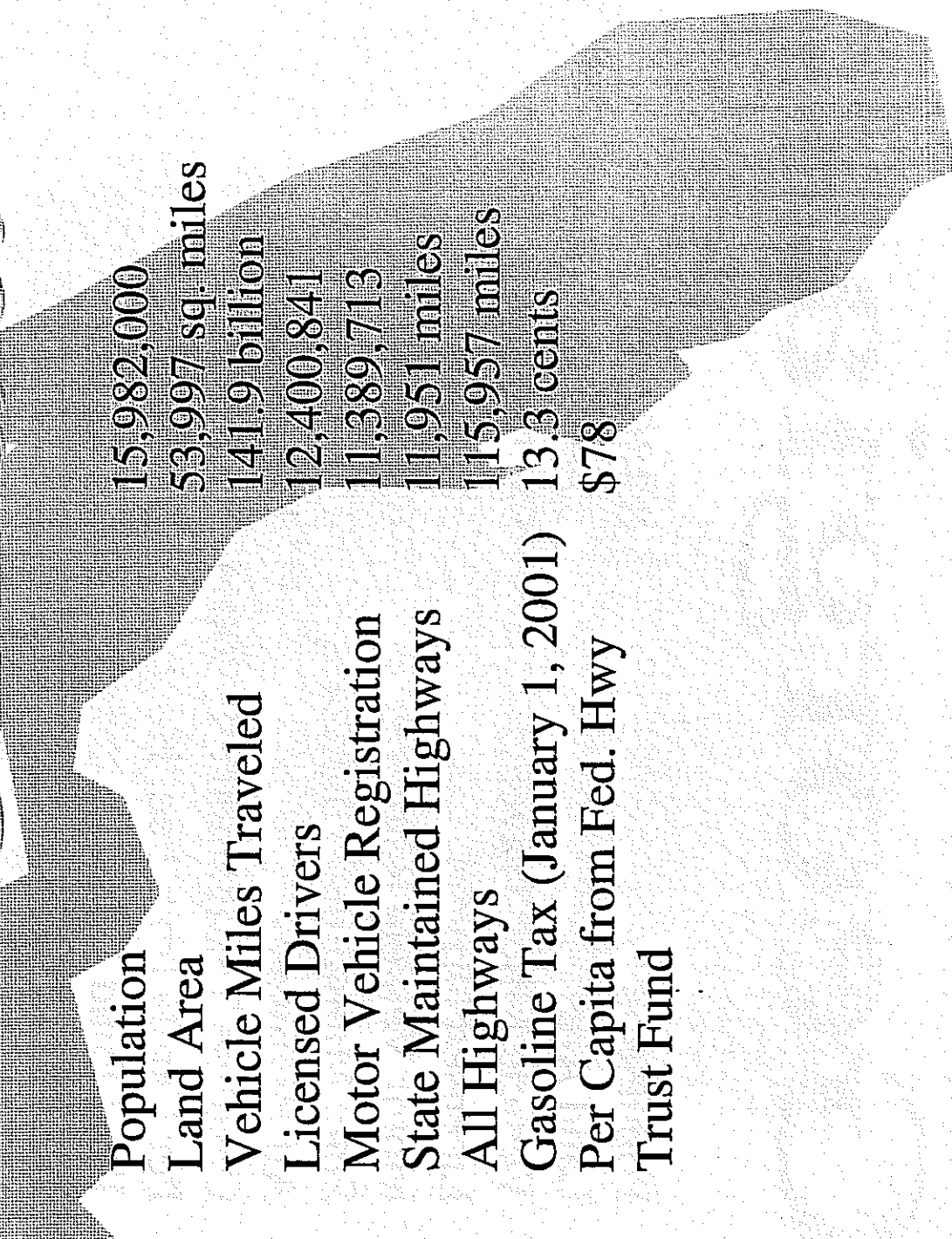
Population	4,447,000
Land Area	50,750 sq. miles
Vehicle Miles Traveled	56.2 billion
Licensed Drivers	3,445,893
Motor Vehicle Registration	3,957,249
State Maintained Highways	10,869 miles
All Highways	94,246 miles
Gasoline Tax (January 1, 2001)	18 cents
Per Capita from Fed. Hwy Trust Fund	\$126

Arkansas



Population	2,673,000
Land Area	52,075 sq. miles
Vehicle Miles Traveled	29.2 billion
Licensed Drivers	1,925,733
Motor Vehicle Registration	1,817,825
State Maintained Highways	16,366 miles
All Highways	97,559 miles
Gasoline Tax (January 1, 2001)	20.6 cents
Per Capita from Fed. Hwy Trust Fund	\$136

Florida

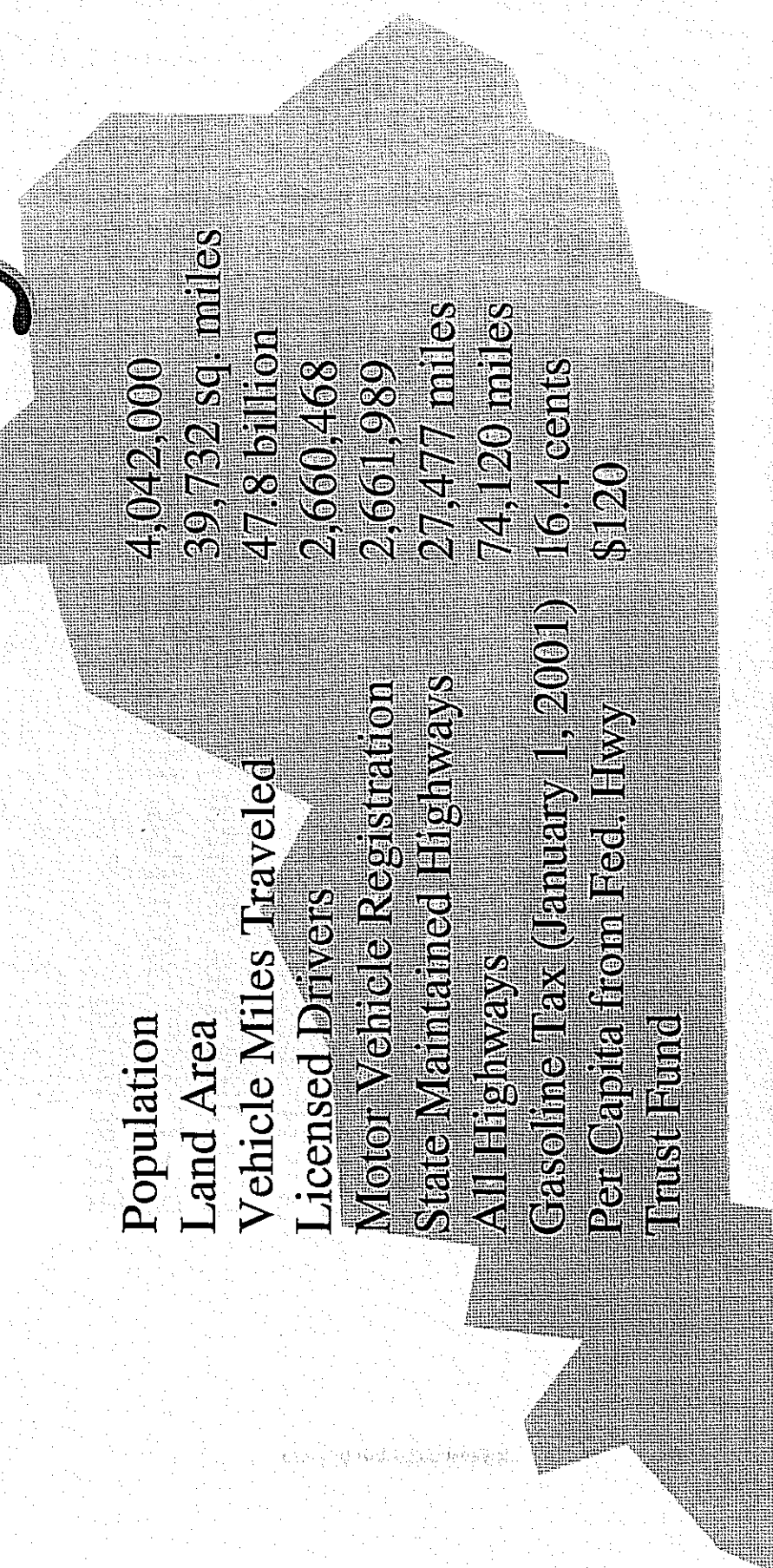


Population	15,982,000
Land Area	53,997 sq. miles
Vehicle Miles Traveled	141.9 billion
Licensed Drivers	12,400,841
Motor Vehicle Registration	11,389,713
State Maintained Highways	11,951 miles
All Highways	115,957 miles
Gasoline Tax (January 1, 2001)	13.3 cents
Per Capita from Fed. Hwy Trust Fund	\$78

Georgia

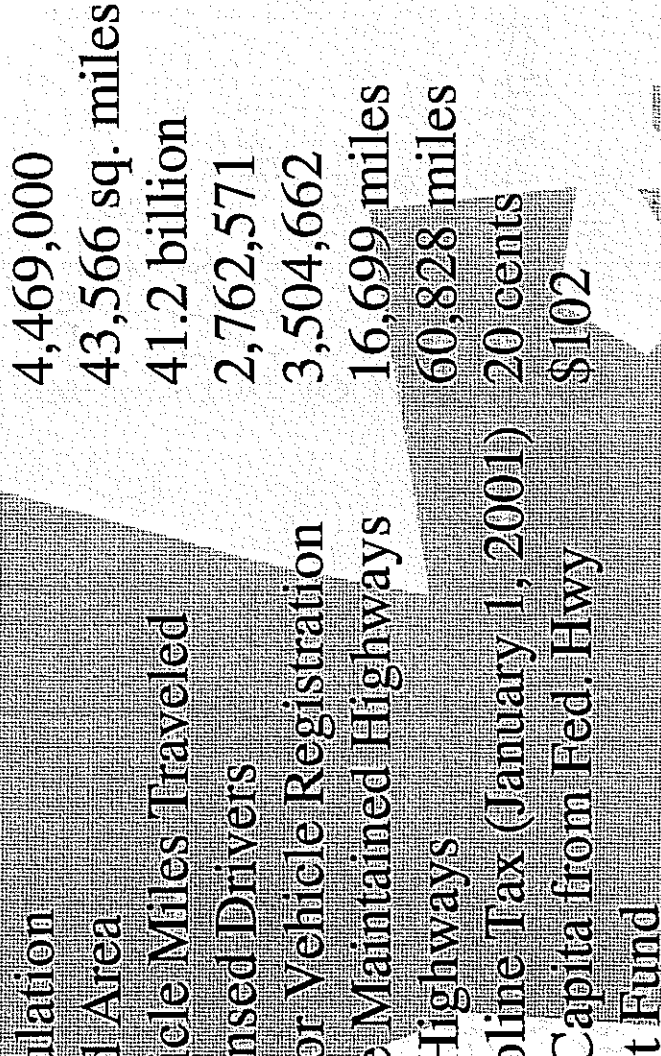
Population	8,186,000
Land Area	57,919 sq. miles
Vehicle Miles Traveled	98.9 billion
Licensed Drivers	5,471,100
Motor Vehicle Registration	6,972,710
State Maintained Highways	17,837 miles
All Highways	113,892 miles
Gasoline Tax (January 1, 2001)	7.5 cents
Per Capita from Fed. Hwy Trust Fund	\$118

Kentucky



Population	4,042,000
Land Area	39,732 sq. miles
Vehicle Miles Traveled	47.8 billion
Licensed Drivers	2,660,468
Motor Vehicle Registration	2,661,989
State Maintained Highways	27,477 miles
All Highways	74,120 miles
Gasoline Tax (January 1, 2001)	16.4 cents
Per Capita from Fed. Hwy Trust Fund	\$120

Louisiana

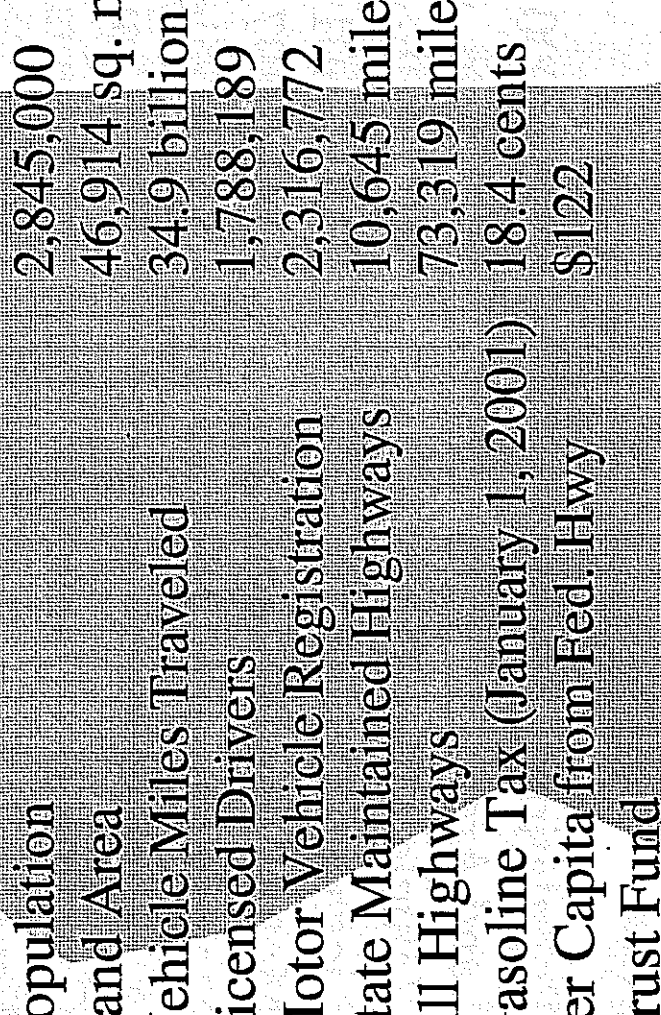


Population	4,469,000
Land Area	43,566 sq. miles
Vehicle Miles Traveled	41.2 billion
Licensed Drivers	2,762,571
Motor Vehicle Registration	3,504,662
State Maintained Highways	16,699 miles
All Highways	60,828 miles
Gasoline Tax (January 1, 2001)	20 cents
Per Capita from Fed. Hwy Trust Fund	\$102

Maryland

Population	5,296,000
Land Area	9,775 sq. miles
Vehicle Miles Traveled	49.1 billion
Licensed Drivers	3,194,601
Motor Vehicle Registration	3,896,297
State Maintained Highways	5,119 miles
All Highways	30,321 miles
Gasoline Tax (January 1, 2001)	23.5 cents
Per Capita from Fed. Hwy Trust Fund	\$82

Mississippi



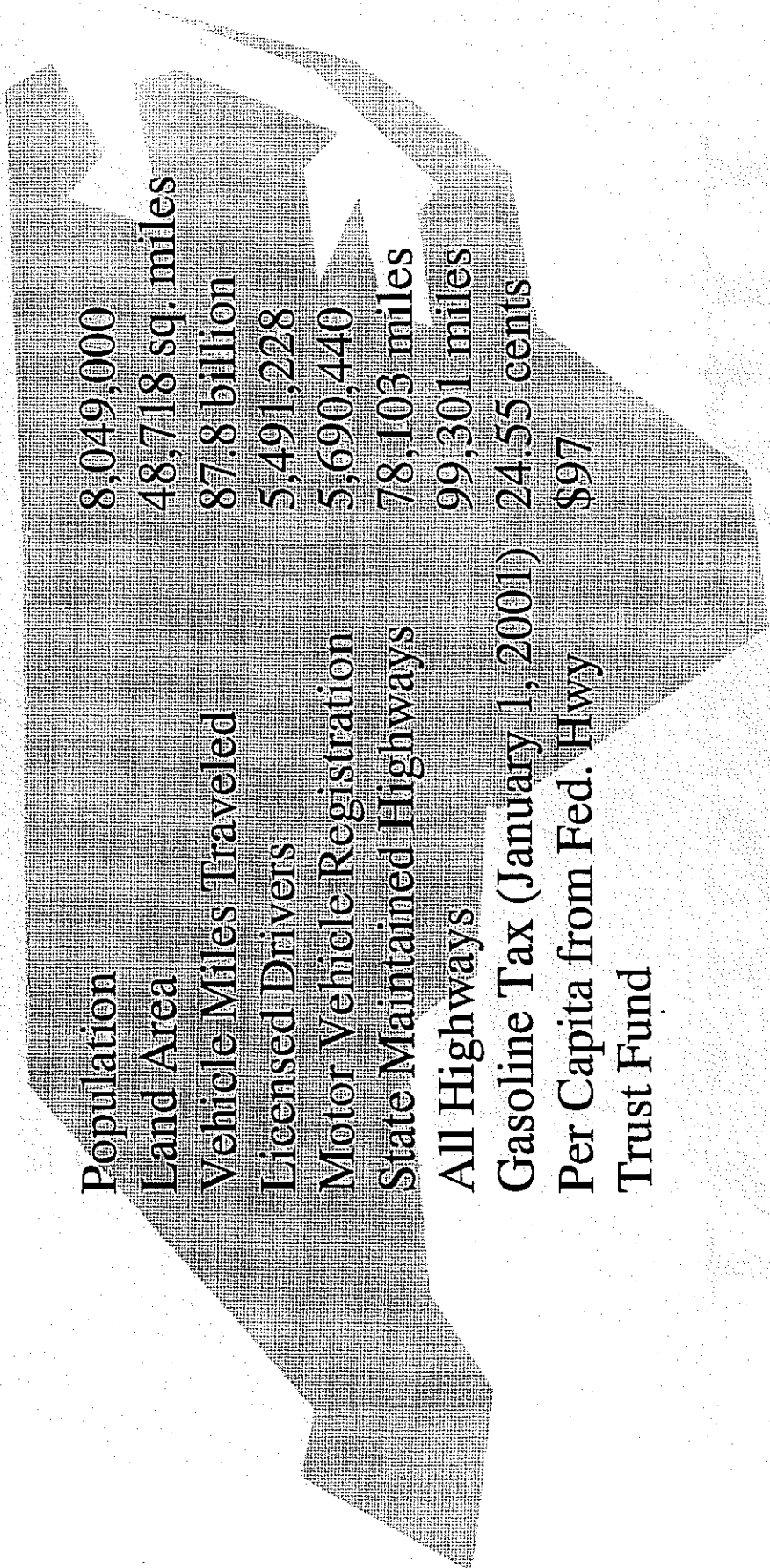
Population	2,845,000
Land Area	46,914 sq. miles
Vehicle Miles Traveled	34.9 billion
Licensed Drivers	1,788,189
Motor Vehicle Registration	2,316,772
State Maintained Highways	10,645 miles
All Highways	73,319 miles
Gasoline Tax (January 1, 2001)	18.4 cents
Per Capita from Fed. Hwy Trust Fund	\$122

Missouri



Population	5,595,000
Land Area	68,898 sq. miles
Vehicle Miles Traveled	66.7 billion
Licensed Drivers	3,839,764
Motor Vehicle Registration	4,404,244
State Maintained Highways	32,407 miles
All Highways	122,829 miles
Gasoline Tax (January 1, 2001)	17.05 cents
Per Capita from Fed. Hwy Trust Fund	\$123

North Carolina

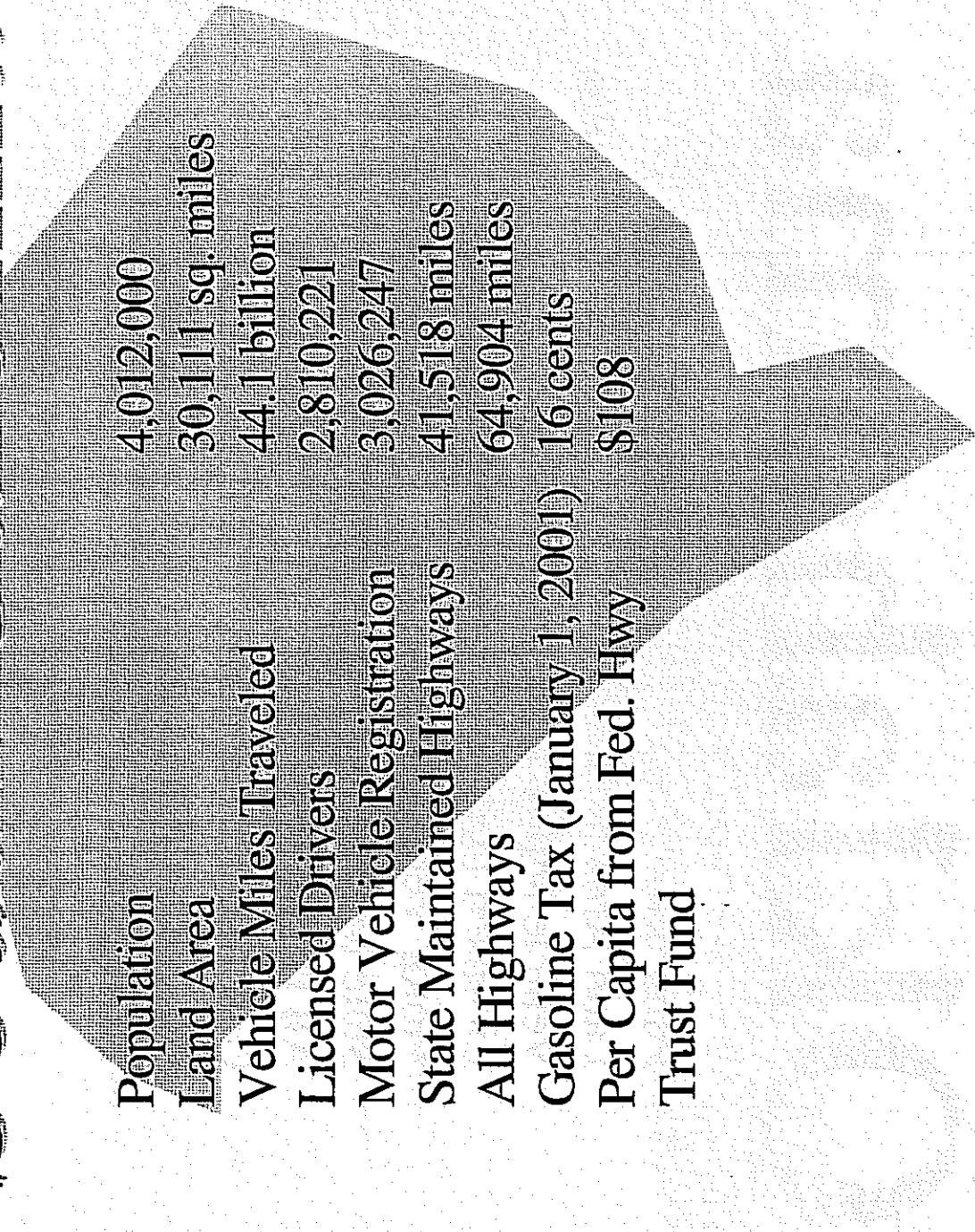


Population	8,049,000
Land Area	48,718 sq. miles
Vehicle Miles Traveled	87.8 billion
Licensed Drivers	5,491,228
Motor Vehicle Registration	5,690,440
State Maintained Highways	78,103 miles
All Highways	99,301 miles
Gasoline Tax (January 1, 2001)	24.55 cents
Per Capita from Fed. Hwy Trust Fund	\$97

Oklahoma

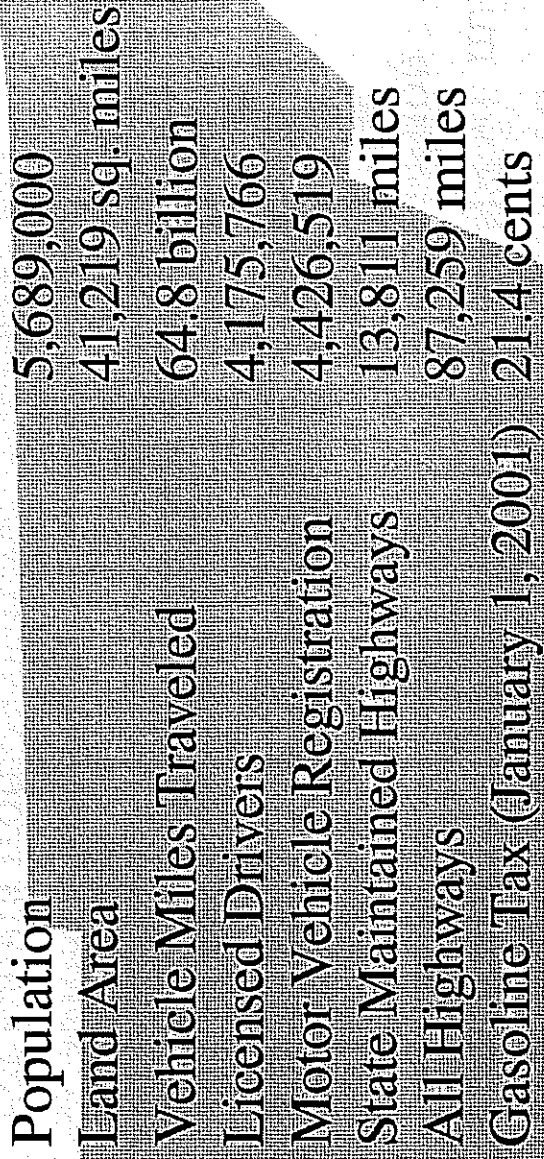
Population	3,451,000
Land Area	68,679 sq. miles
Vehicle Miles Traveled	42.6 billion
Licensed Drivers	2,312,621
Motor Vehicle Registration	2,931,486
State Maintained Highways	12,276 miles
All Highways	112,510 miles
Gasoline Tax (January 1, 2001)	17 cents
Per Capita from Fed. Hwy Trust Fund	\$120

South Carolina



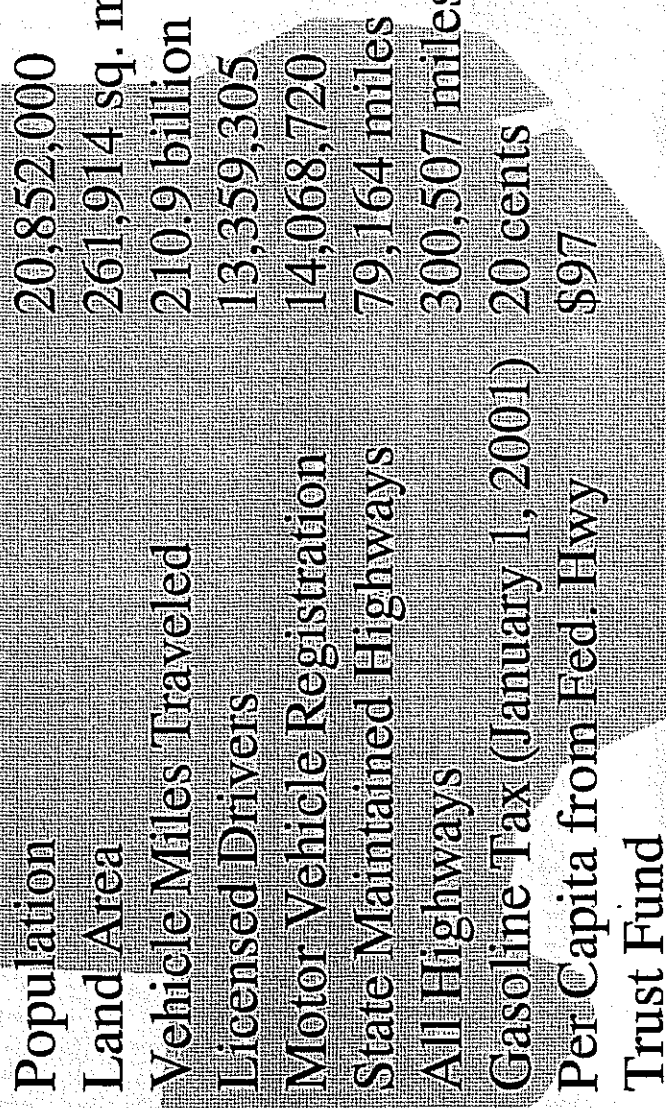
Population	4,012,000
Land Area	30,111 sq. miles
Vehicle Miles Traveled	44.1 billion
Licensed Drivers	2,810,221
Motor Vehicle Registration	3,026,247
State Maintained Highways	41,518 miles
All Highways	64,904 miles
Gasoline Tax (January 1, 2001)	16 cents
Per Capita from Fed. Hwy Trust Fund	\$108

Tennessee

A grayscale map of the state of Tennessee is positioned in the background of the table. The map shows the state's outline with internal county boundaries, and it is oriented horizontally on the page.

Population	5,689,000
Land Area	41,219 sq. miles
Vehicle Miles Traveled	64.8 billion
Licensed Drivers	4,175,766
Motor Vehicle Registration	4,426,519
State Maintained Highways	13,811 miles
All Highways	87,259 miles
Gasoline Tax (January 1, 2001)	21.4 cents
Per Capita from Fed. Hwy	\$111
Trust Fund	

Texas

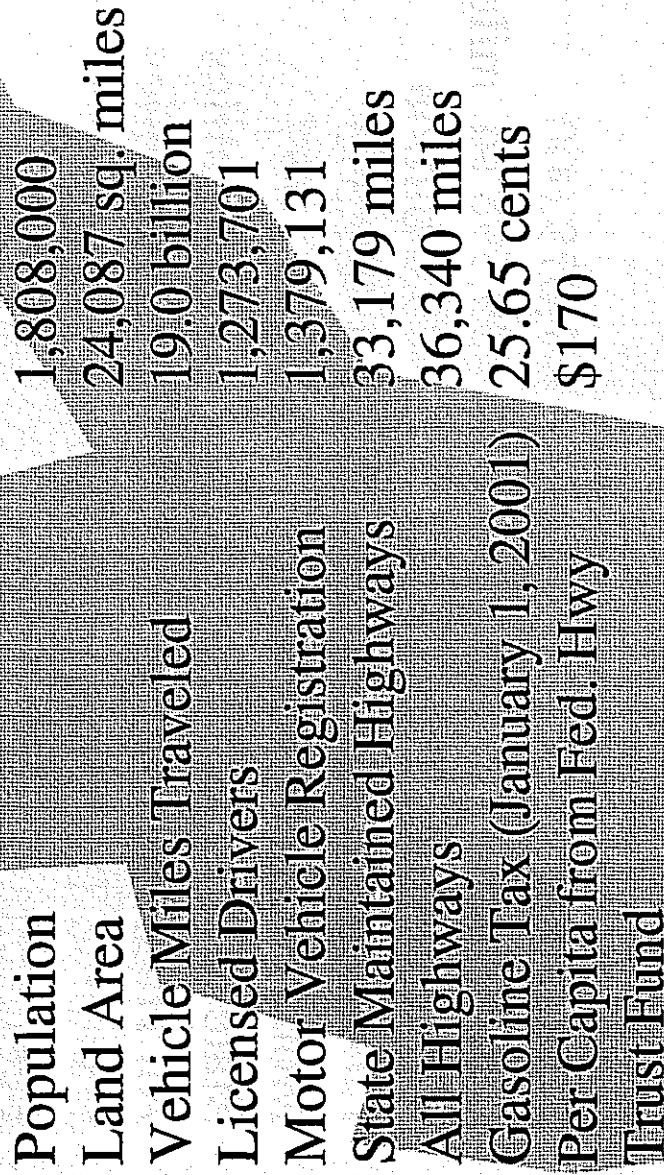


Population	20,852,000
Land Area	261,914 sq. miles
Vehicle Miles Traveled	210.9 billion
Licensed Drivers	13,359,305
Motor Vehicle Registration	14,068,720
State Maintained Highways	79,164 miles
All Highways	300,507 miles
Gasoline Tax (January 1, 2001)	20 cents
Per Capita from Fed. Hwy	\$97
Trust Fund	

Virginia

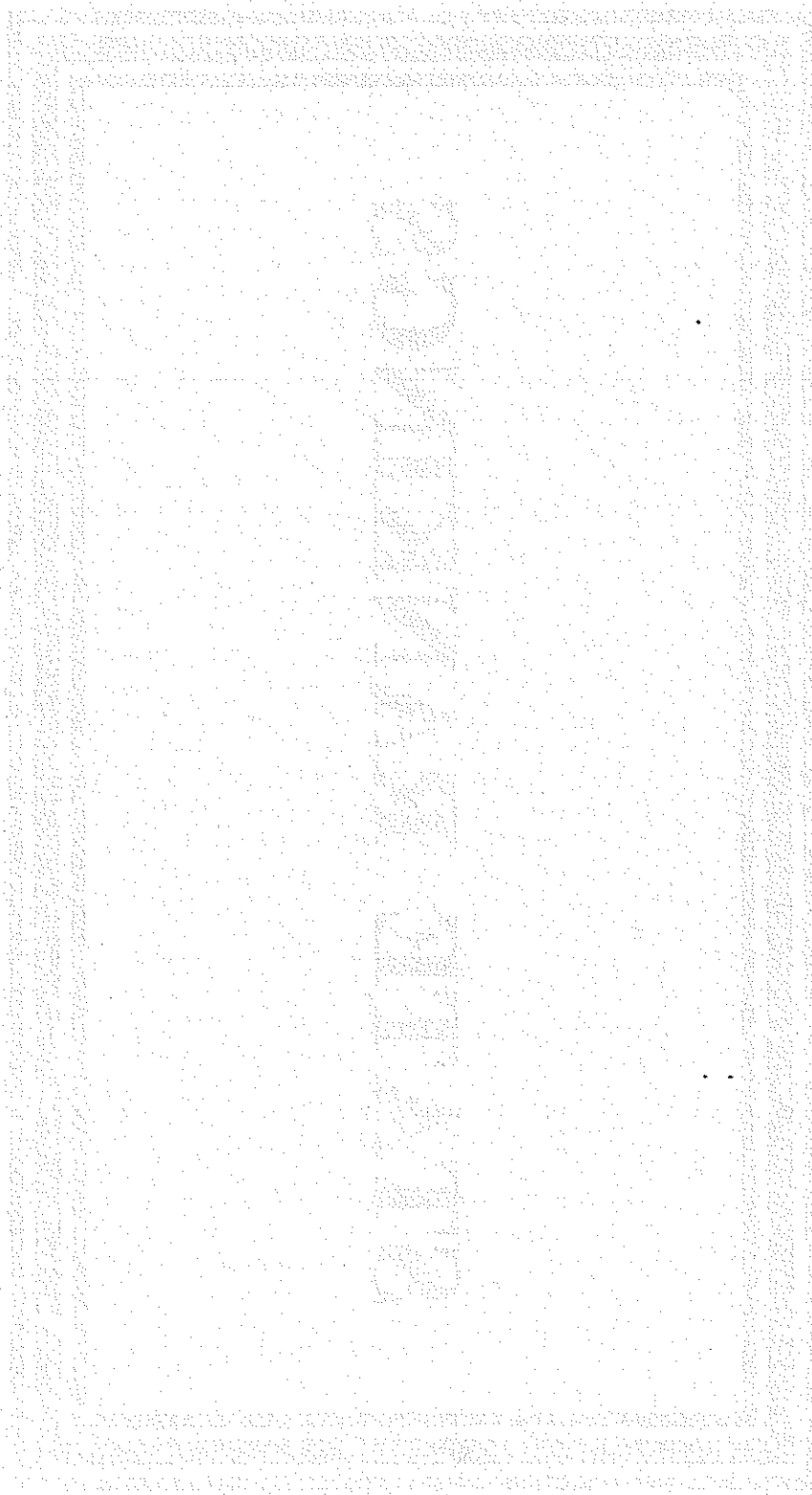
Population	7,079,000
Land Area	39,598 sq. miles
Vehicle Miles Traveled	73.9 billion
Licensed Drivers	4,729,373
Motor Vehicle Registration	5,871,157
State Maintained Highways	57,735 miles
All Highways	70,325 miles
Gasoline Tax (January 1, 2001)	17.5 cents
Per Capita from Fed. Hwy Trust Fund	\$100

West Virginia

A grayscale map of the state of West Virginia is positioned in the background of the table. The map shows the state's irregular shape, including its mountainous terrain and surrounding neighbors.

Population	1,808,000
Land Area	24,087 sq. miles
Vehicle Miles Traveled	19.0 billion
Licensed Drivers	1,273,701
Motor Vehicle Registration	1,379,131
State Maintained Highways	33,179 miles
All Highways	36,340 miles
Gasoline Tax (January 1, 2001)	25.65 cents
Per Capita from Fed. Hwy Trust Fund	\$170

STATE RANKINGS



STATE RANKINGS 1999

State	Land Area	Rank	2000 Population	Rank	Licensed Drivers	Rank	MV Registration	Rank	Vehicle Miles Traveled (billions)	Rank
Alabama	50,750	7	4,447,000	10	3,445,893	8	3,957,249	8	53.5	8
Arkansas	52,075	6	2,673,000	15	1,925,733	14	1,817,825	15	28.1	15
Florida	53,997	5	15,982,000	2	12,400,841	2	11,389,713	2	134.0	2
Georgia	57,919	4	8,186,000	3	5,471,100	4	6,972,710	3	93.3	3
Kentucky	39,732	12	4,042,000	11	2,660,468	12	2,661,989	13	44.8	10
Louisiana	43,566	10	4,469,000	9	2,762,571	11	3,504,662	10	38.8	13
Maryland	9,775	16	5,296,000	8	3,194,601	9	3,896,297	9	46.6	9
Mississippi	46,914	9	2,845,000	14	1,788,189	15	2,316,772	14	31.5	14
Missouri	68,898	2	5,595,000	6	3,839,764	7	4,404,244	7	63.0	6
North Carolina	48,718	8	8,049,000	4	5,491,228	3	5,690,440	5	81.9	4
Oklahoma	68,679	3	3,451,000	13	2,312,621	13	2,931,486	12	41.4	11
South Carolina	30,111	14	4,012,000	12	2,810,221	10	3,026,247	11	41.3	12
Tennessee	41,219	11	5,689,000	7	4,175,766	6	4,426,519	6	60.5	7
Texas	261,914	1	20,852,000	1	13,359,305	1	14,068,720	1	198.7	1
Virginia	39,598	13	7,079,000	5	4,729,373	5	5,871,157	4	70.3	5
West Virginia	24,087	15	1,808,000	16	1,273,701	16	1,379,131	16	18.3	16
Total	937,952		104,475,000		71,641,375		78,315,161		1,046.0	

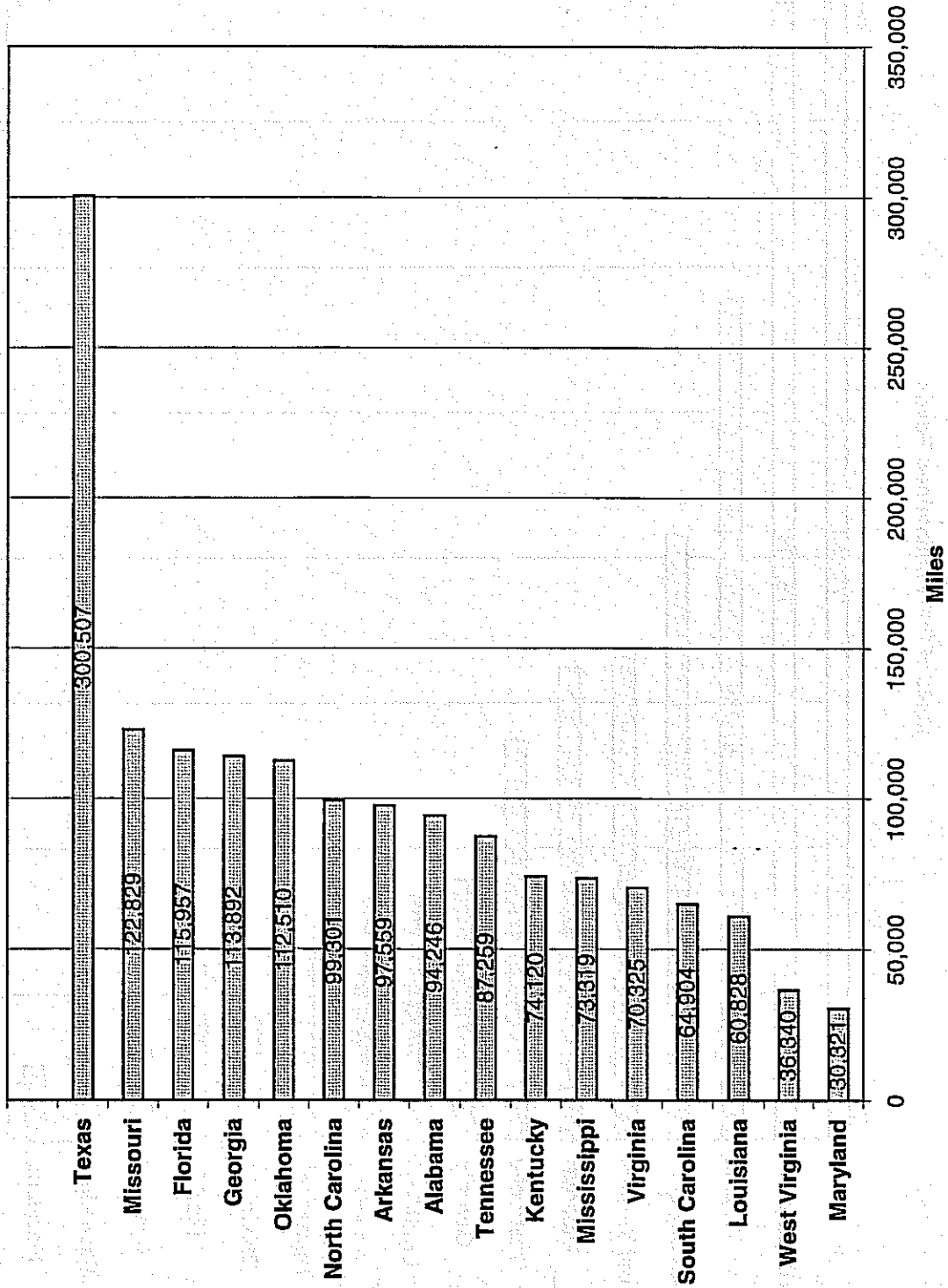
Source: Bureau of the Census; U.S. DOT, Federal Highway Administration, "Highway Statistics, 1999"

STATE RANKINGS 1999

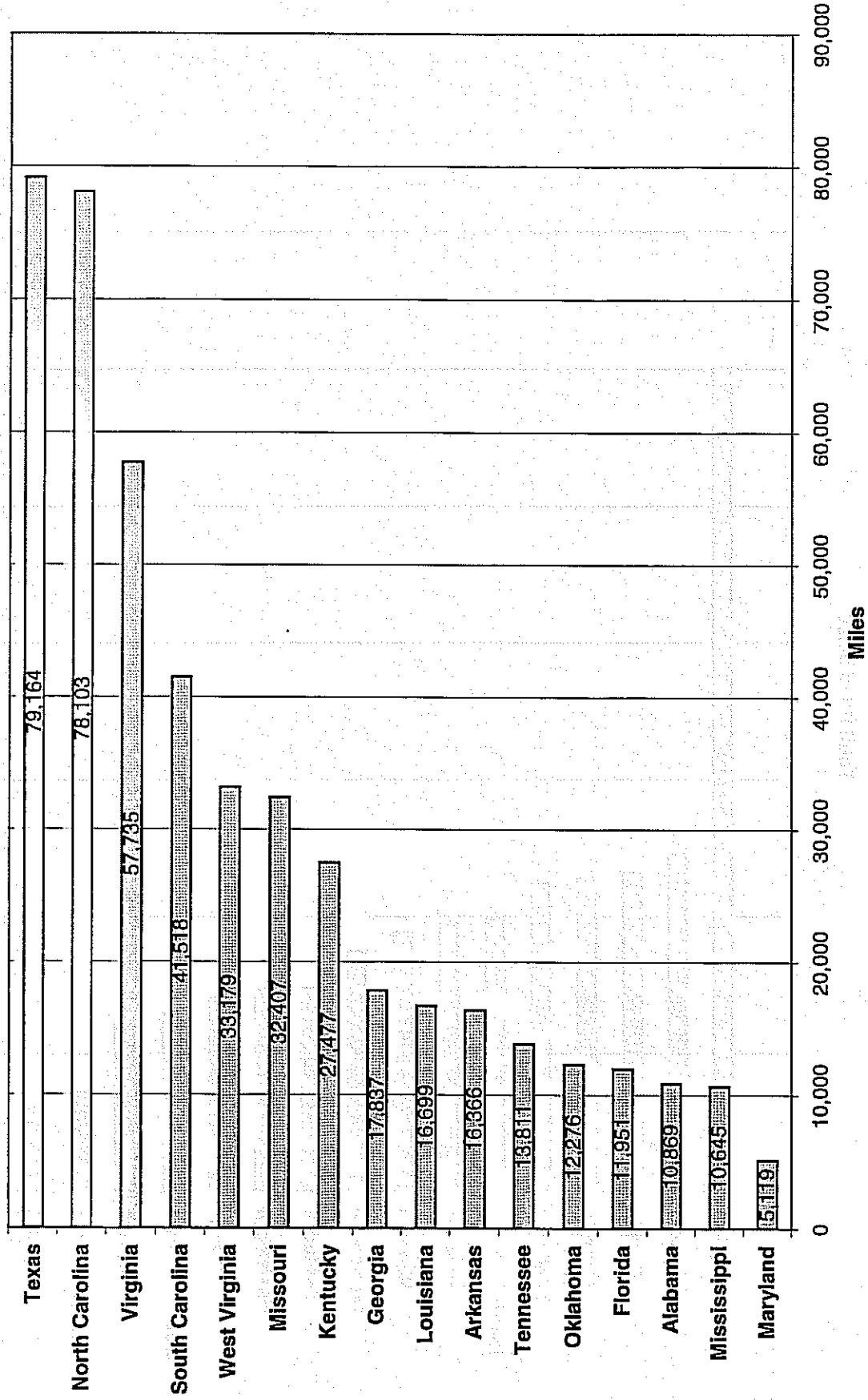
State	Miles of State Roads Maintained	Rank	Total Road Miles	Rank	Apportionment from FHTF (Thousands)	Rank	Per Capita Federal Highway Spending	Rank	Ratio Apportionment From/Payment into FHTF	Rank
Alabama	10,869	14	94,246	8	\$424,817	8	\$126	4	0.91	14
Arkansas	16,366	10	97,559	7	\$319,346	11	\$136	2	0.89	12
Florida	11,951	13	115,957	3	\$933,549	2	\$78	9	0.83	2
Georgia	17,837	8	113,892	4	\$684,769	3	\$118	15	0.86	4
Kentucky	27,477	7	74,120	10	\$383,470	9	\$120	3	0.86	4
Louisiana	16,699	9	60,828	14	\$309,623	13	\$102	16	0.89	12
Maryland	5,119	16	30,321	16	\$306,296	14	\$82	14	0.86	4
Mississippi	10,645	15	73,319	11	\$243,100	16	\$122	10	0.86	4
Missouri	32,407	6	122,829	2	\$476,278	6	\$123	11	0.91	14
North Carolina	78,103	2	99,301	6	\$592,821	4	\$97	5	0.88	9
Oklahoma	12,276	12	112,510	5	\$316,283	12	\$120	8	0.88	9
South Carolina	41,518	4	64,904	13	\$332,688	10	\$108	6	0.82	1
Tennessee	13,811	11	87,259	9	\$442,024	7	\$111	12	0.87	8
Texas	79,164	1	300,507	1	\$1,445,855	1	\$97	13	0.84	3
Virginia	57,735	3	70,325	12	\$531,328	5	\$100	7	0.88	9
West Virginia	33,179	5	36,340	15	\$257,597	15	\$170	1	1.38	16
Total	465,156		1,554,217		\$7,999,844				0.90	

Source: Federal Highway Administration, "Highway Statistics, 1999"

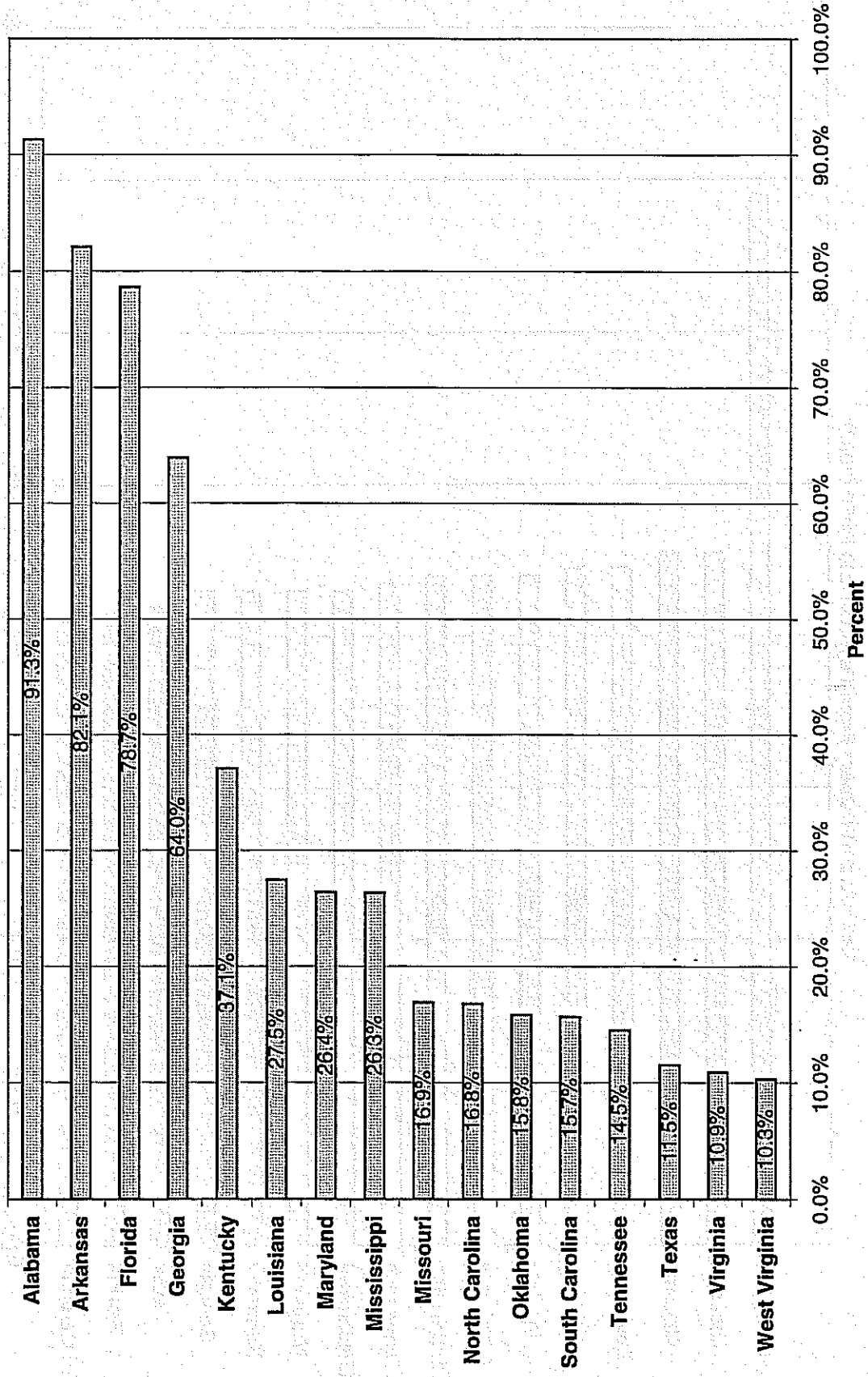
Total Road Miles



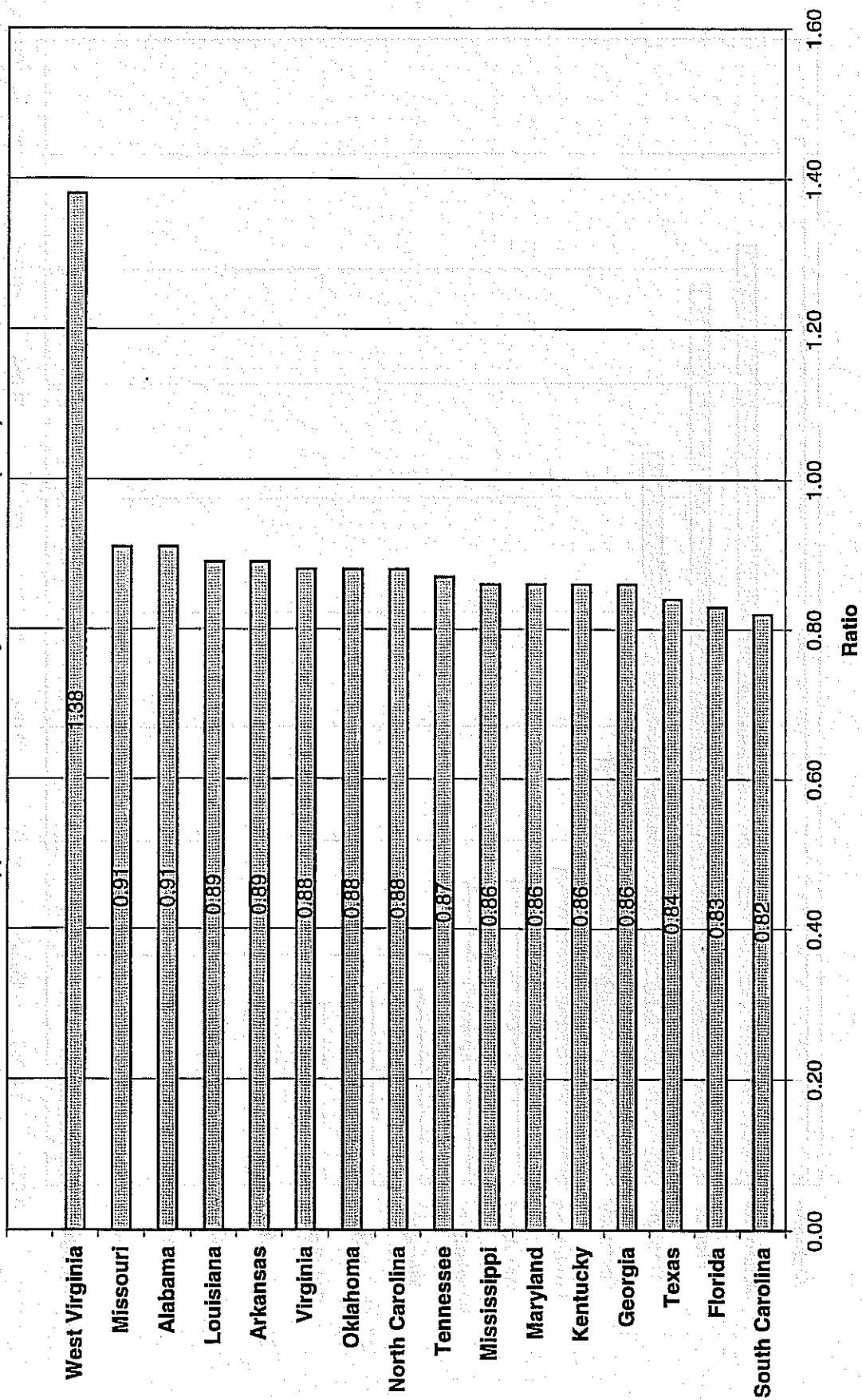
Miles of State Maintained Roads



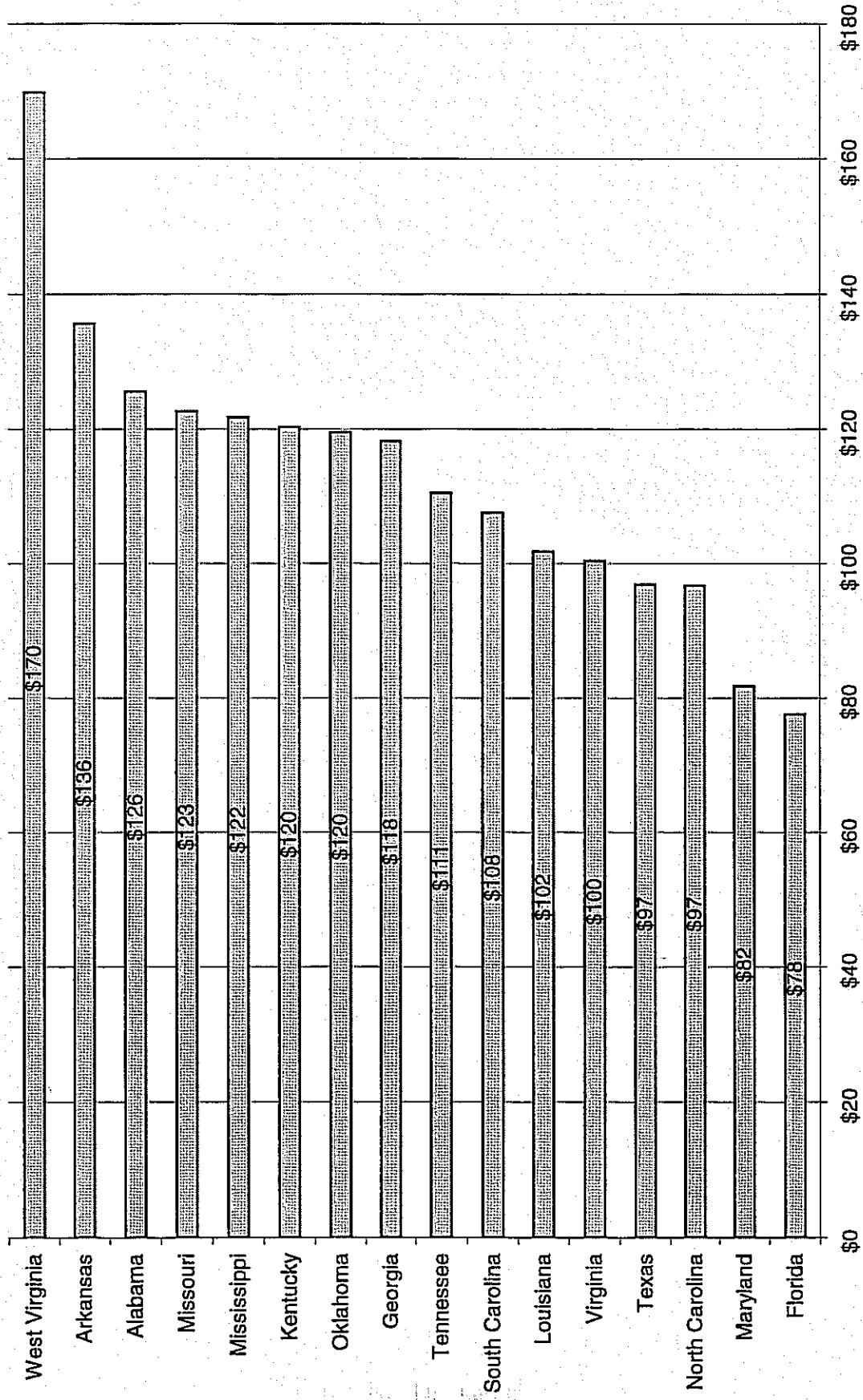
State Maintained Road Miles as Percentage of All Road Miles



Ratio Apportionment From-Payment into FHTF (1999)



Per Capita Federal Highway Spending



1000 900 800 700 600 500 400 300 200 100 0



1000 900 800 700 600 500 400 300 200 100 0

ADMINISTRATION



**Summary of Characteristics of Transportation Departments, Governing Bodies, and Administrators By State
With Statutory Qualifications of Appointed Board/Commission Members**

<u>State</u>	<u>Department Trans- High- portation way</u>	<u>Governing Board or Commission</u>				<u>Administrator</u>	
		<u>Board or Commission Members</u>	<u>Elected or Appointed</u>	<u>By Whom</u>	<u>Term</u>	<u>Title</u>	<u>Appointed By Whom</u>
Alabama	✓	none				Director	Governor
Arkansas	✓	Commission	5	Appointed	Governor 10 years	Director	Commission
					From state at large, with no two appointed from any single congressional district; qualified electors of state		
Florida	✓	Commission (Advisory)	9	Appointed	Governor 4 years	Secretary	Governor
					Represent all geographic areas of the state; registered voter and citizen of state, must possess business managerial experience in the private sector.		
Georgia	✓	Board	11	Elected	Legislative Caucus 5 years	Commissioner	Board
					As many members as congressional districts, with each member elected by a majority vote of House and Senate members whose respective districts are embraced or partly embraced within such district		
Kentucky	✓	none				Secretary	Governor
Louisiana	✓	none				Secretary	Governor
Maryland	✓	Commission	17	Appointed	Governor 3 years	Secretary	Governor
					Seven regional members of State Roads Commission as ex officio; ten members appointed by Governor shall be residents with, preferably, experience in one of fields under department's jurisdiction and shall not be associated business interests		
Mississippi	✓	Commission	3	Elected		Director	Commission
Missouri	✓	Commission	6	Appointed	Governor 6 years	Director	Commission
					Taxpayer and resident of state for at least five years prior to appointment; no more than three to be members of same political party.		

**Summary of Characteristics of Transportation Departments, Governing Bodies, and Administrators By State
With Statutory Qualifications of Appointed Board/Commission Members**

<u>State</u>	<u>Department Trans- High- portation way</u>	<u>Governing Board or Commission</u>						<u>Administrator</u>	
		<u>Board or Commission</u>	<u>Members</u>	<u>Elected or Appointed</u>	<u>By Whom</u>	<u>Term</u>	<u>Qualifications</u>	<u>Title</u>	<u>Appointed By Whom</u>
North Carolina	✓	Board	19	Appointed	Governor	4 years	Fourteen members, one from each of fourteen districts, shall be appointed by Governor; five shall be at-large members appointed by Governor; at least three of members shall be registered voters of a political party other than that of Governor; no more than two members shall reside in same district; the Secretary of Transportation shall be a resident of the State.	Secretary	Governor
Oklahoma	✓	Commission	8	Appointed	Governor	8 years	One from each of eight maintenance districts; citizen and resident of district for at least three years prior to date of appointment.	Secretary	Commission
South Carolina	✓	Commission	7	Elected Appointed	Legislative delegation, Governor	4 years	One appointed by Governor from state at large and one each elected by the delegations of the six congressional district from each transportation district (based on congressional districts).	Director	Commission
Tennessee	✓	none						Commissioner	Governor

**Summary of Characteristics of Transportation Departments, Governing Bodies, and Administrators By State
With Statutory Qualifications of Appointed Board/Commission Members**

State	Department Trans- portation way	Governing Board or Commission						Administrator	
		Board or Commission	Members	Elected or Appointed	By Whom	Term	Qualifications	Title	Appointed By Whom
Texas	✓	Commission	3	Appointed	Governor	6 years	One must reside in a rural area and each must represent the general public; members or their spouses may not be employed: in a business that receives funds from the department; directly or indirectly own 10% interest in a business or organization that receives funds from the department; uses or receives substantial amount of tangible goods, services, or funds from the department; registered, certified or licensed by the department; an officer, employee, or paid consultant of a Texas trade association in the field of road construction or maintenance, aviation, or outdoor advertising; or a Texas trade association of	Director	Commission
Virginia	✓	Board	17	Appointed	Secretary	4 years	Secretary of Transportation, Commonwealth Transportation Commissioner, and Director of Rail and Public Transportation; nine from each of nine highway districts; five from state at large.	Commissioner	Governor
West Virginia	✓	none						Commissioner	Governor

SOURCE: Mississippi Legislature, Joint Committee on Performance Evaluation and Expenditure Review

MAJOR FUNCTIONS OF TRANSPORTATION DEPARTMENT

State	Highway Construction and Maintenance	Vehicle Regulator	Truck Weights Measure	Enforcement
Alabama	X			
Arkansas	X		X	X
Florida	X		X	X ¹
Georgia	X		X	X ¹
Kentucky	X	X	X	X
Louisiana	X		X	X
Maryland	X	X	X	X
Mississippi	X		X	X
Missouri	X			
North Carolina	X	X	X	X ³
Oklahoma	X			
South Carolina	X			
Tennessee	X			
Texas	X	X		
Virginia	X		X	
West Virginia ²	X	X	X	X ³

1 Enforcement of truck weights and dimensions.

2 Economic Development an tourism also included.

3 Enforcement of truck weights.

MAJOR FUNCTIONS OF TRANSPORTATION DEPARTMENT (continued)

State	Toll Operations	Rail/Public Transportation	Highway Safety	Airport Construction	Ports Funding	Airport
Alabama		X ¹	X			
Arkansas		X	X			
Florida	X	X	X		X	X ²
Georgia	X ³	X	X	X ²		X ²
Kentucky	X	X		X		X
Louisiana	X	X		X	X	X
Maryland	X	X	X	X	X	X
Mississippi		X		X ⁴		
Missouri		X		X ⁴	X ⁵	X
North Carolina		X	X	X ⁴		
Oklahoma		X				X
South Carolina		X				
Tennessee	X	X	X			X
Texas		X				X ⁶
Virginia	X	1	X			
West Virginia	X	X	X		X	X

1 Rail Planning and Rural Public Transportation.

2 Capital Assistance for Airport Improvements.

3 Operated by State Tollway Authority.

4 Grants made for airport construction.

5 Administrative Grants

6 Involved only with airports for general aviation.

1. The first step in the process of
 identifying a problem is to
 determine the nature of the
 problem. This involves a
 careful analysis of the
 situation and the data
 available.

1. The first step in the process of identifying a problem is to determine the nature of the problem. This involves a careful analysis of the situation and the data available.	2. The second step is to identify the causes of the problem. This involves a thorough investigation of the factors that may be contributing to the problem.	3. The third step is to develop a plan of action. This involves determining the steps that need to be taken to solve the problem.	4. The fourth step is to implement the plan. This involves putting the plan into action and monitoring the progress.	5. The fifth step is to evaluate the results. This involves assessing the effectiveness of the plan and making adjustments as needed.	6. The sixth step is to communicate the results. This involves sharing the findings with the relevant stakeholders.	7. The seventh step is to document the process. This involves creating a record of the steps taken and the results achieved.	8. The eighth step is to review the process. This involves reflecting on the experience and identifying areas for improvement.	9. The ninth step is to share the knowledge. This involves disseminating the findings to others who may be facing similar problems.	10. The tenth step is to continue to learn. This involves staying up-to-date on the latest research and best practices.
--	---	---	--	---	---	--	--	---	---

The process of identifying a problem is a continuous one. It involves a constant state of awareness and a willingness to learn from experience.

STATE HIGHWAY FINANCE



REVENUES USED BY STATES FOR STATE-ADMINISTERED HIGHWAYS - 1999

November 2000

(Thousands of Dollars)

State	Highway-User Revenues				Appropriations from General Funds	Other State Imposts	Miscellaneous	Issue of Bonds		Payment from Other Governments		
	Motor-Fuel Taxes	Motor-Vehicle and Motor-Carrier Taxes	Road and Crossing Tolls	Total				For Capital Outlay	For Debt Service Including Refunding	Federal Funds	Other Agencies	From Local Gov'ts.
Alabama	380,017	107,416	-	487,433	22,163	6,149	5,086	-	-	405,539	2,555	11,646
Arkansas	235,336	105,624	-	340,960	7,515	1,886	11,060	-	-	266,738	2,399	5,598
Florida	952,036	600,543	493,306	2,105,885	-	97,323	172,466	295,447	228,038	708,308	7,164	76,102
Georgia	390,812	213,670	21,367	625,849	154,837	134,363	56,720	155,364	-	621,171	4,509	-
Kentucky	242,007	541,199	13,434	796,640	396	-	75,713	-	-	365,319	3,032	-
Louisiana	512,798	148,951	35,644	697,393	42,917	-	26,533	77,130	31,988	322,180	4,622	-
Maryland	255,749	332,776	142,179	730,704	5,467	95,419	25,011	-	-	309,458	2,316	3,407
Mississippi	259,255	84,468	-	343,723	-	62,831	11,698	330,730	-	210,813	2,645	2,645
Missouri	447,394	185,811	-	633,205	9,908	167,221	10,229	-	-	433,564	4,356	-
North Carolina	856,326	148,402	1,709	1,006,437	-	502,913	101,037	-	-	691,979	4,736	-
Oklahoma	169,300	227,515	127,800	524,615	-	2,671	56,097	71,709	-	267,989	3,403	10,677
South Carolina	383,185	64,529	-	447,714	3,278	-	20,124	199,008	764	280,388	2,180	924
Tennessee	450,307	209,283	27	659,617	5,808	29,597	23,079	-	-	469,319	2,609	4,966
Texas	1,523,912	722,022	72,282	2,318,216	-	26,361	142,087	-	-	1,504,815	11,109	128,759
Virginia	622,977	555,517	81,957	1,260,451	-	373,294	74,002	371,058	-	512,476	8,537	33,059
West Virginia	293,620	204,484	49,870	547,974	20,533	-	26,556	220,000	-	265,014	8,151	1,313
Southern States	7,975,031	4,512,210	1,039,575	13,526,816	272,822	1,500,028	837,498	1,720,446	260,770	7,645,070	74,323	279,096
US Total	19,103,284	11,285,779	4,323,381	34,712,424	2,063,511	2,517,687	2,192,871	7,570,924	957,999	19,472,421	367,364	1,158,038
												940,571
												636,166
												3,690,733
												1,752,813
												1,241,100
												1,202,743
												1,171,782
												965,085
												1,258,483
												2,307,102
												937,161
												964,380
												1,194,995
												4,131,347
												2,632,877
												1,089,541
												26,116,869
												71,013,239

Revenues used for State-administered roads and bridges. Reflects activities of State highway departments, State park boards, other State agencies, and quasi-State toll facilities.

General Fund appropriations for highways are net of highway-user revenues placed in the State General Fund.

Source: Federal Highway Administration, "Highway Statistics, 1999"

DISBURSEMENTS FOR STATE-ADMINISTERED HIGHWAYS - 1999 ¹

November 2000

(Thousands of Dollars)

State	Capital Outlay for Roads and Bridges ²	Maintenance and Highway Services ²	Administration, Research and Planning ²	Highway Law Enforcement and Safety	Interest	Bond Retirement	Total Disbursements
Alabama	554,576	155,658	85,173	75,683	1,048	3,350	875,488
Arkansas	396,397	133,034	21,908	39,564	-	-	590,903
Florida	2,489,170	484,218	194,176	177,124	204,869	168,513	3,718,070
Georgia	1,230,898	149,546	67,410	97,228	63,154	137,988	1,746,224
Kentucky	833,568	184,217	136,309	53,137	78,004	81,199	1,366,434
Louisiana	704,414	153,489	117,777	96,420	20,090	106,795	1,198,985
Maryland	598,665	231,908	63,548	142,202	17,049	63,330	1,116,702
Mississippi	619,982	68,698	34,704	49,810	6,286	3,780	783,260
Missouri	805,394	330,413	53,072	108,570	-	-	1,297,449
North Carolina	1,483,122	511,507	125,856	165,406	11,683	16,675	2,314,249
Oklahoma	688,710	153,856	67,163	78,347	69,018	16,261	1,073,355
South Carolina	487,148	158,759	59,528	82,295	7,089	4,320	799,139
Tennessee	706,472	236,742	104,321	70,411	-	-	1,117,946
Texas	2,866,376	846,745	303,195	388,528	42,067	7,270	4,454,181
Virginia	1,389,482	751,205	209,823	116,001	75,273	28,755	2,570,539
West Virginia	517,001	289,270	47,262	21,430	21,467	33,300	929,730
Southern States	16,371,375	4,839,265	1,691,225	1,762,156	617,097	671,536	25,952,654
US TOTAL	41,264,246	11,964,041	4,737,626	5,334,597	2,773,124	3,580,188	69,653,822

¹ Summarizes receipts and disbursements for State-administered roads and bridges.

² The classification of administration and miscellaneous expenditures is not uniform.

Source: US DOT, Federal Highway Administration, "Highway Statistics, 1999", Table SF4

FUEL TAXES



FUEL TAX RATES – January 1, 2001

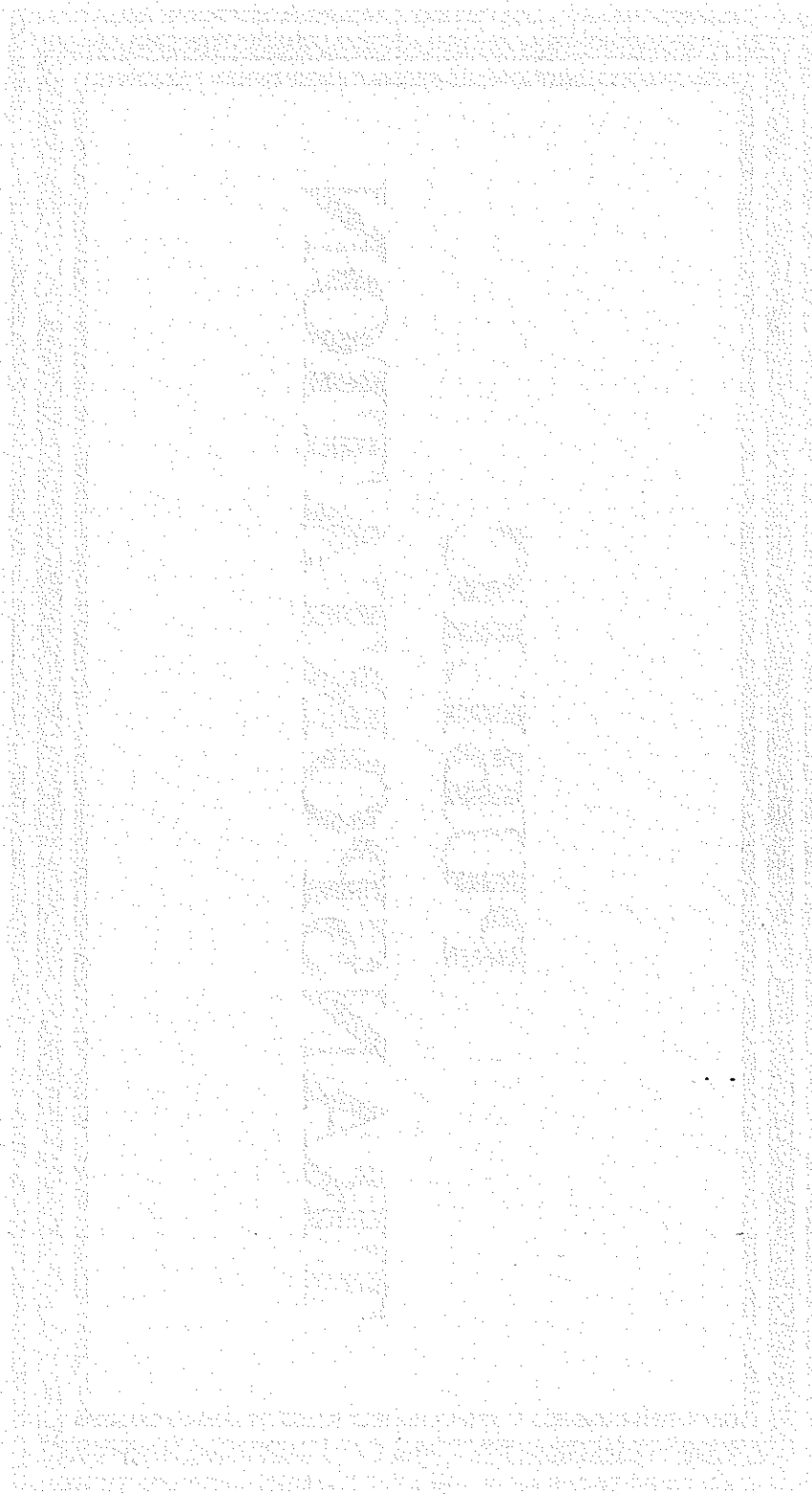
(CENTS PER GALLON)

	Gasoline	Diesel	Gasohol
Alabama ¹	18.00	19.00	18.00
Arkansas ²	20.60	22.60	20.60
Florida	13.3	25.40	13.30
Georgia ³	7.50	7.50	7.50
Kentucky ⁴	16.40	13.40	16.40
Louisiana	20.00	20.00	20.00
Maryland	23.50	24.30	23.50
Mississippi	18.40	18.40	18.40
Missouri	17.05	17.05	15.05
North Carolina	24.55	24.55	24.55
Oklahoma	17.00	14.00	17.00
South Carolina	16.00	16.00	16.00
Tennessee ⁵	21.40	18.40	21.40
Texas	20.00	20.00	20.00
Virginia ⁶	17.50	16.00	17.50
West Virginia	25.65	25.65	25.65
Federal	18.40	24.40	13.10

Source: Federation of Tax Administrators, www.taxadmin.org

1. Includes a 2 cents per gallon inspection fee. Does not include local option tax (1-3 cents).
2. Will increase by 1 cent on July 1, 2000.
3. Sales tax applicable (3%).
4. Carriers pay an additional surcharge (2%).
5. Does not include local option tax (1 cent).
6. Large trucks pay a higher tax (additional 3.5 cents).

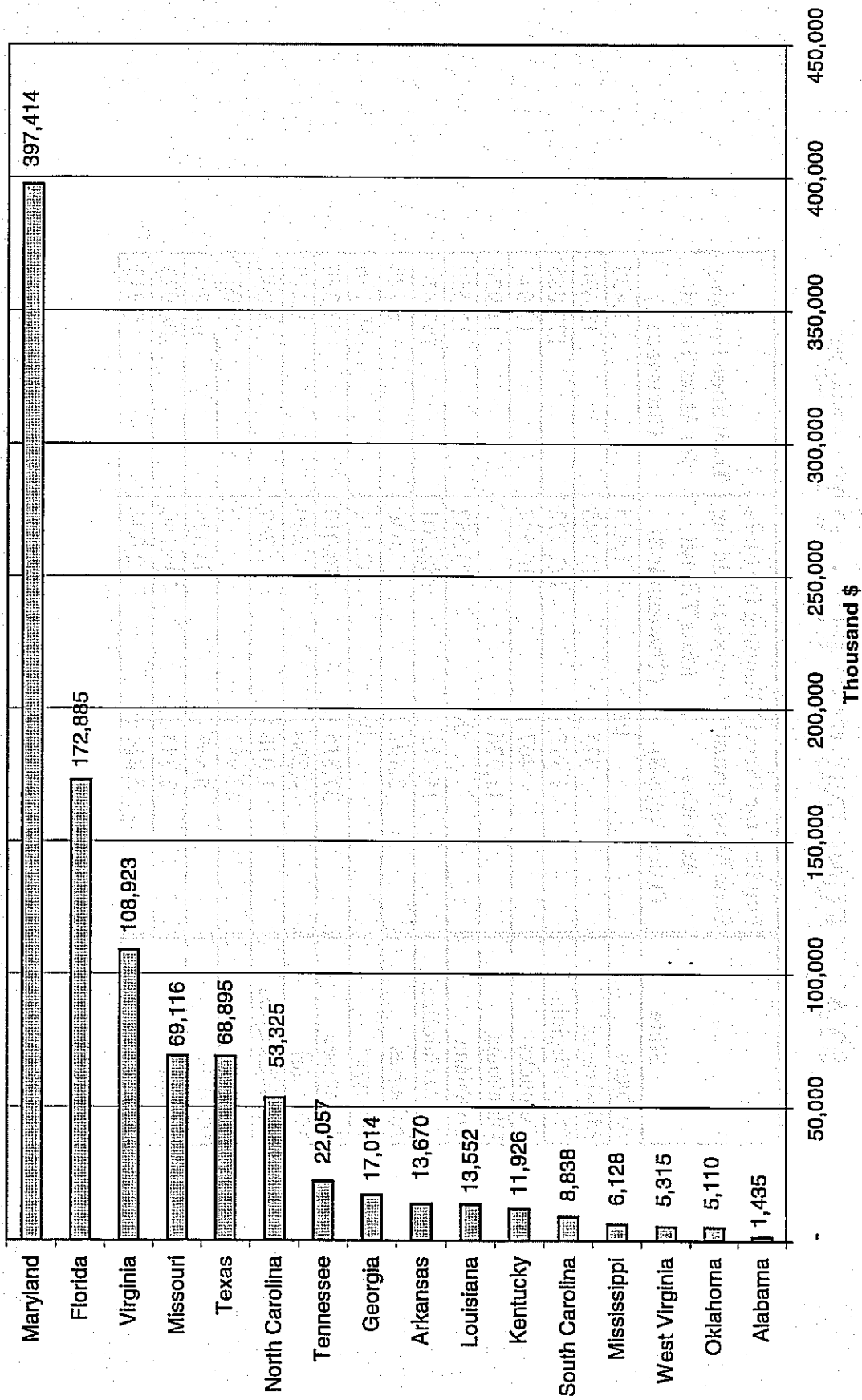
PUBLIC TRANSPORTATION



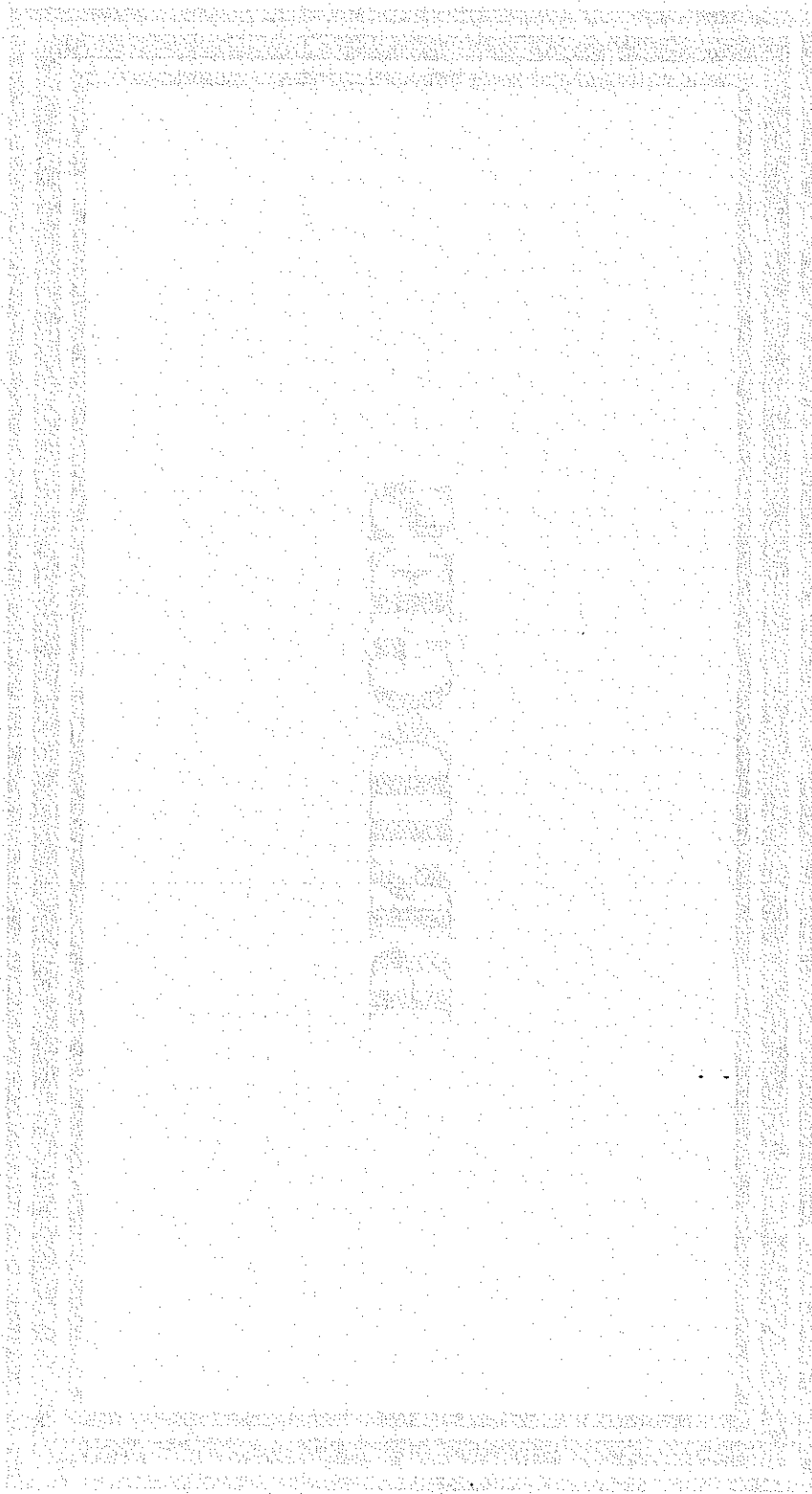
STATE FUNDING FOR PUBLIC TRANSIT

State	Funding for Direct State Mass Transit Activities (Thousands \$)	Funding for State Grants In Aid for Mass Transit (Thousands \$)	Total State Funding for Mass Transit (Thousands \$)
Alabama	0	1,435	1,435
Mississippi	325	13,345	13,670
West Virginia	1,113	171,772	172,885
Kentucky	467	16,547	17,014
Oklahoma	11,926	0	11,926
Louisiana	0	13,552	13,552
South Carolina	15,213	382,201	397,414
Arkansas	3,492	2,636	6,128
Georgia	0	69,116	69,116
Tennessee	37,315	16,010	53,325
Missouri	4,260	850	5,110
North Carolina	1,076	7,762	8,838
Texas	22,057	0	22,057
Virginia	5,569	63,326	68,895
Florida	2,743	106,180	108,923
Maryland	3,221	2,094	5,315

Total State Funding for Transit



BRIDGES

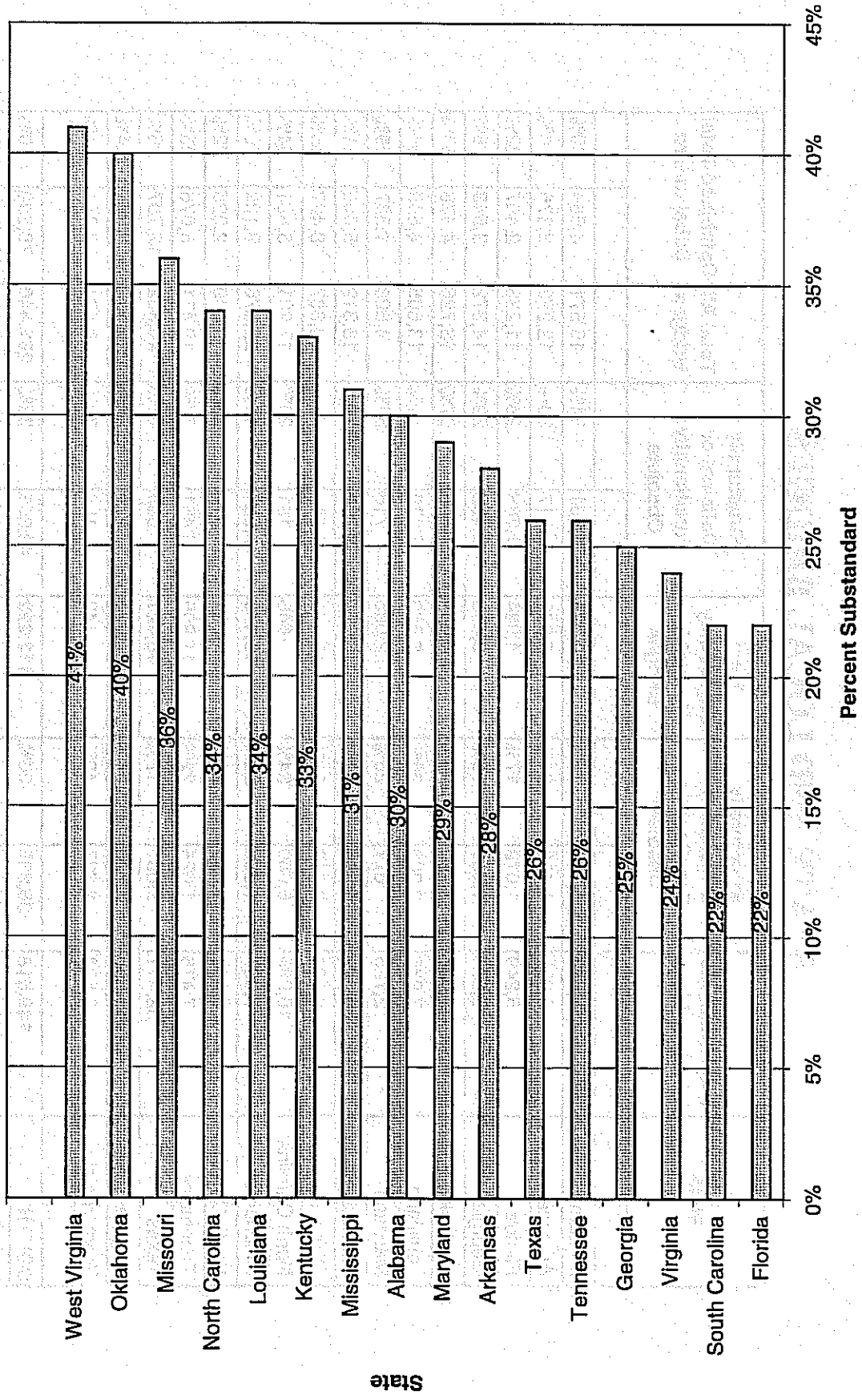


STATE AND LOCAL BRIDGES

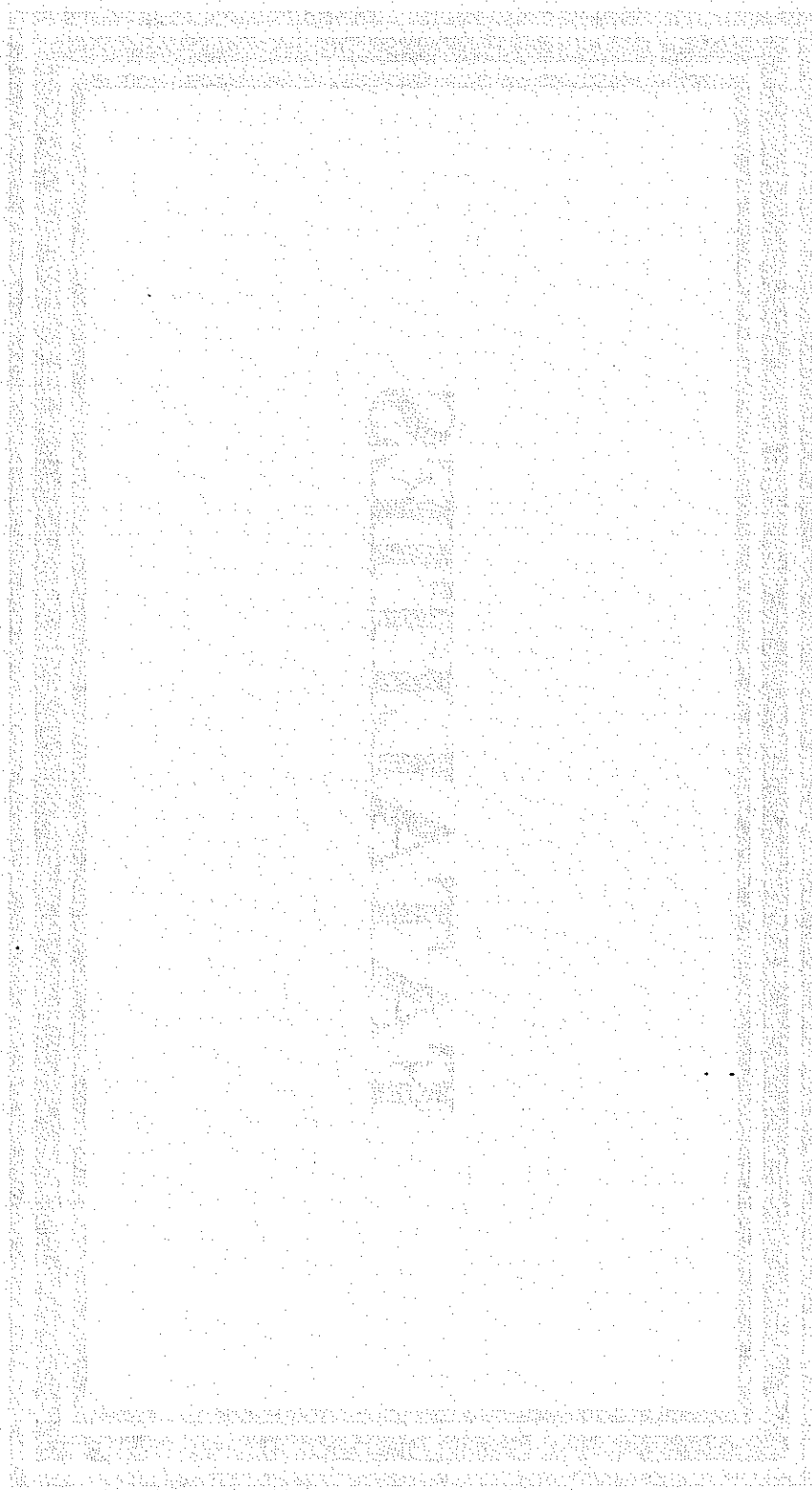
State	Total Interstate & State Bridges	Structurally Deficient or Functionally Obsolete	Total City/County Township Bridges	Structurally Deficient or Functionally Obsolete	Total All Bridges	Combined Total Substandard
Alabama	5,542	1,323	10,029	3,361	15,571	4,684
Arkansas	6,982	1,458	5,290	1,917	12,272	3,375
Florida	6,249	1,079	4,984	1,388	11,233	2,467
Georgia	5,874	1,051	8,498	2,492	14,372	3,543
Kentucky	9,036	2,720	4,690	1,758	13,726	4,478
Louisiana	7,936	2,306	5,669	2,339	13,605	4,645
Maryland	2,725	671	2,098	716	4,823	1,387
Mississippi	5,342	1,249	10,970	3,760	16,312	5,009
Missouri	9,924	2,812	13,443	5,615	23,367	8,427
North Carolina	16,585	5,680	646	181	17,231	5,861
Oklahoma	7,397	1,605	15,479	7,524	22,876	9,129
South Carolina	8,211	1,698	838	322	9,049	2,020
Tennessee	7,476	1,625	11,995	3,451	19,471	5,076
Texas	32,411	5,651	16,421	7,056	48,832	12,707
Virginia	11,390	2,770	1,029	271	12,419	3,041
West Virginia	6,538	2,637	143	104	6,681	2,741
SOUTH	149,618	36,335	112,222	42,255	261,840	78,590
NATION	281,410	65,250	310,681	102,071	592,091	167,321

Source: Better Roads, 1999 Figures

Percent of Interstate and State Bridges that are Substandard



FATALITIES



Fatality Rate

