

Division TEACCH



Treatment and Education of Autistic and related
Communication-handicapped Children



Division TEACCH

Treatment and Education of Autistic and related Communication-handicapped Children

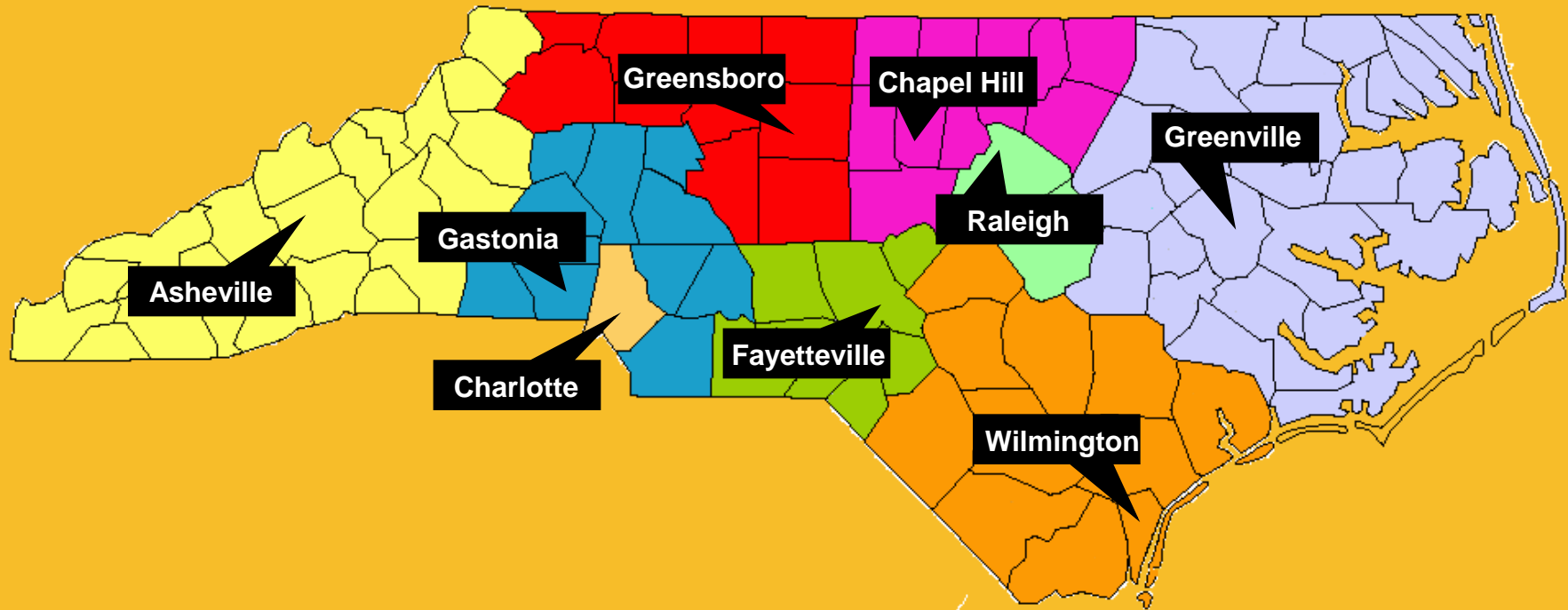


Treatment and Education of Autistic and Communication handicapped Children, a division of the Department of Psychiatry in the School of Medicine at UNC, is a statewide program for treatment and education of individuals of all ages with autism and their families.



Division TEACCH

Treatment and Education of Autistic and related Communication-handicapped Children

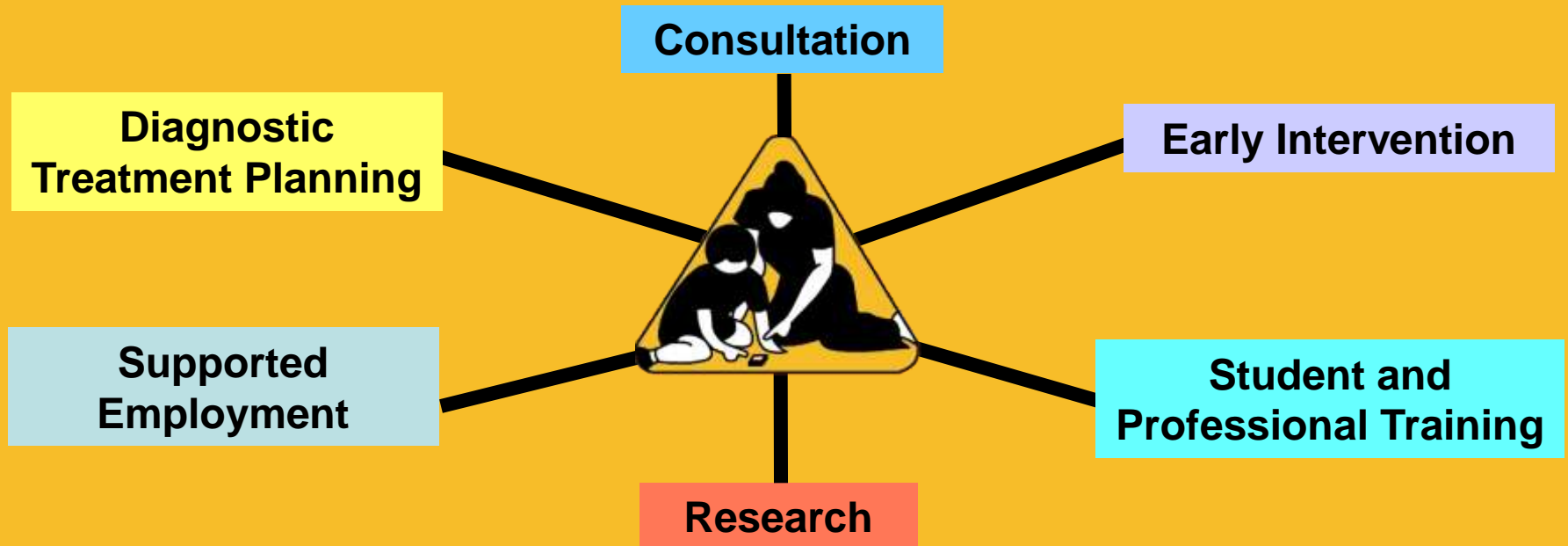


TEACCH is comprised of an Administration and Research unit (based at UNC), as well as 9 regional outpatient clinics located in various cities throughout the state, and a Residential facility for adults with Autism located in Pittsboro, NC.



Division TEACCH

Treatment and Education of Autistic and related Communication-handicapped Children



In addition to outpatient clinics that provide services to families throughout NC, TEACCH also has Supported Employment Programs for adults with autism, and Early Intervention programs for young children with autism and their families. TEACCH also provides training and consultation to students and professionals throughout NC and the world, and is also instrumental in autism research.



Division TEACCH

Treatment and Education of Autistic and related Communication-handicapped Children

TEACCH Programs and Services





Division TEACCH

Treatment and Education of Autistic and related Communication-handicapped Children

Diagnostic and Treatment Planning

TEACCH provides diagnostic and treatment planning services to over 3,500 individuals and their families throughout North Carolina each year

TEACCH receives over 1,500 new referrals for services each year.





Division TEACCH

Treatment and Education of Autistic and related Communication-handicapped Children

Early Intervention Services



TEACCH provides hands-on early intervention classroom training to over 100 young children with autism each year.



Division TEACCH

Treatment and Education of Autistic and related Communication-handicapped Children

Early Intervention Services



In addition to hands-on classroom training, TEACCH provides in-home training and support to over 300 families of young children with autism each year.



Division TEACCH

Treatment and Education of Autistic and related Communication-handicapped Children

Supported Employment Program



The TEACCH Supported Employment Program helps over 100 adults with autism obtain and retain gainful employment each year.



Division TEACCH

Treatment and Education of Autistic and related Communication-handicapped Children

Supported Employment Program

Since this program was first started in 1989, TEACCH has helped over 1,000 adults with autism obtain and retain gainful employment.





Division TEACCH

Treatment and Education of Autistic and related Communication-handicapped Children

Student and Professional Training



Over 150 students (undergraduate, graduate, and post-doctorial) students train with TEACCH each year. Many of the leaders in the field of autism in North Carolina and throughout the world have received their autism training through studies with Division TEACCH.



Division TEACCH

Treatment and Education of Autistic and related Communication-handicapped Children

Student and Professional Training



TEACCH also provides training to over 7,500 teachers and other professionals each year from both NC and throughout the world. Last year, over 1,800 teachers and other professionals throughout various counties in North Carolina received training in autism through these TEACCH trainings.



Division TEACCH

Treatment and Education of Autistic and related Communication-handicapped CHildren

Student and Professional Training



Today, through TEACCH training efforts, more than 45 states and 25 countries throughout the world have programs for autism that were implemented with TEACCH assistance.



Division TEACCH

Treatment and Education of Autistic and related Communication-handicapped Children

Consultation

TEACCH staff throughout the state consult to teachers and administrators in over 100 school systems and 500 individual schools each year.





Division TEACCH

Treatment and Education of Autistic and related Communication-handicapped Children

Research

Through research done over 40 years ago by Dr. Eric Schopler, TEACCH was developed in 1972, and was the first program in the world established to help individuals with autism and their families vs. having these people institutionalized.

Most recently, these are a few of the projects TEACCH is working on which will help many individuals with autism throughout the state...and the world...





Division TEACCH

Treatment and Education of Autistic and related Communication-handicapped Children

Research

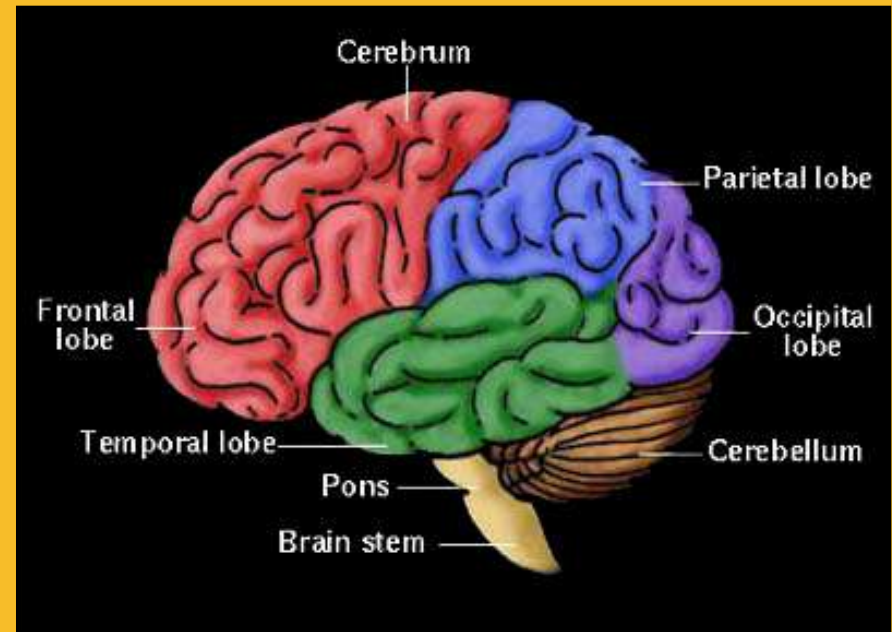


In collaboration with the NDRC (Neurodevelopmental Disorders Research Center (also at UNC) in 2002, TEACCH helped develop and is providing client/family information into the first database for autism research that is being used by researchers in the field of autism throughout the world to further research in the field of autism.



Research

Dr. Joe Piven, internationally preeminent Biomedical Researcher, leads a stellar UNC Autism research effort investigating important problems in genetics, brain development and functioning, and sensory processing at UNC.





Research

In collaboration with the Frank Porter Graham Child Development Institute, TEACCH will begin this year assisting with the implementation of a Professional Development Center for educational professionals working with students with Autism Spectrum Disorders.

The center will promote the use of best practices in the field of autism through providing assistance in the areas of early screening and diagnosis, intervention and education, the development of model program sites, and the provision of training and technical assistance.





Division TEACCH

Treatment and Education of Autistic and related Communication-handicapped Children

Research



With a grant from NIMH, TEACCH is developing PDA devices that assist adults with autism with their daily work and living skills.

With a grant from CVS pharmacy, TEACCH is developing better ways to provide more intensive in-home treatment programs to help assist young children with autism and their families.

Division TEACCH



www.teacch.com