



---

---

# 2009 Report Card for America's Infrastructure



---

# OUTLINE

---

National Review

ASCE Five Key Solutions

Southeastern Data

2009

REPORT  
CARD

★★★★ for ★★★★★

america's  
INFRASTRUCTURE

---

# America's Infrastructure

GPA:

---

D

2009

REPORT  
CARD

★★★★ for ★★★★★

america's  
INFRASTRUCTURE

# 2009 Report Card for America's Infrastructure

Aviation	D	Public Parks & Recreation	C-
Bridges	C	Rail	C-
Dams	D	Roads	D-
Drinking Water	D-	Schools	D
Energy	D+	Solid Waste	C+
Hazardous Waste	D	Transit	D
Inland Waterways	D-	Wastewater	D-
Levees	D-		

2009  
REPORT  
CARD

★★★★ for ★★★★★

america's  
INFRASTRUCTURE

**ASCE**<sup>®</sup>  
American Society of Civil Engineers

---

# Estimated Five Year Investment Need

---

**\$2.2 trillion**

---

# ASCE's Five Key Solutions

---

1. **Increase** state & federal leadership
2. **Promote** sustainability & resilience
3. **Develop** national, regional and state infrastructure plans
4. **Address** life-cycle costs
5. **Increase & improve** investment from all stakeholders

---

# Dams D

---

- 85,000 dams in the U.S.
- 4,000 high hazard dams, of those, 1,819 are deficient
- Average age is 51 years
- Over last 6 years every deficient high-hazard dam repaired – two were declared deficient

2009

REPORT  
CARD

★★★★ for ★★★★★

america's  
INFRASTRUCTURE

2009  
REPORT  
CARD

★★★★ for ★★★★★

america's  
INFRASTRUCTURE

# Drinking Water D-

- Leaking pipes lose an average of 7 billion gallons of treated water a day
- EPA estimates an annual investment gap of \$11 billion



2009

REPORT  
CARD

★★★★ for ★★★★★

america's  
INFRASTRUCTURE

---

# Hazardous Waste D

---

- Clean-up of Superfund sites slowed in recent years
- Cost to clean up all Superfund sites: \$200 billion
- Redeveloped Brownfields sites created an extra 200,000 jobs and \$400 million in tax revenue for localities in 2008

2009  
REPORT  
CARD

★★★★ for ★★★★★

america's  
INFRASTRUCTURE

---

# Levees D-

---

- New Category for 2008
- 100,000 miles of levees in the U.S.
- Over 85% are locally owned
- Little information available on condition
- Cost to repair: \$100 billion+

2009  
REPORT  
CARD

★★★★ for ★★★★★

america's  
INFRASTRUCTURE

---

# Solid Waste C+

---

- Recycling increased 7% since 2000
  - Per capita waste generation has stayed constant
  - New worry: Electronic waste
-

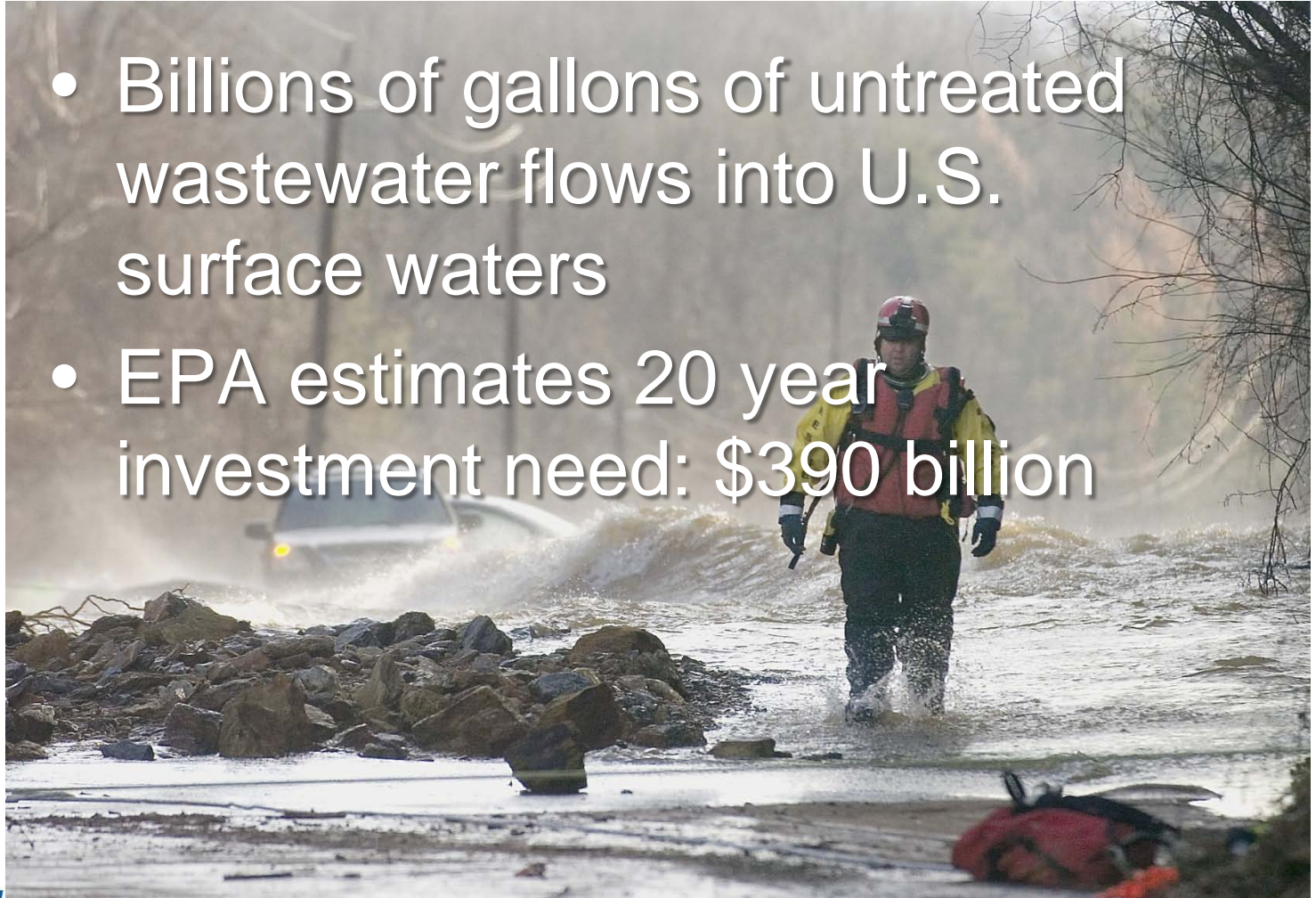
2009  
REPORT  
CARD

★★★★ for ★★★★★

america's  
INFRASTRUCTURE

# Wastewater D-

- Billions of gallons of untreated wastewater flows into U.S. surface waters
- EPA estimates 20 year investment need: \$390 billion



2009  
REPORT  
CARD

★★★★ for ★★★★★

america's  
INFRASTRUCTURE

## Aviation D

- Failure to enact FAA Authorization
- 3% increase in travel expected
- Out dated air traffic control system



2009  
REPORT  
CARD

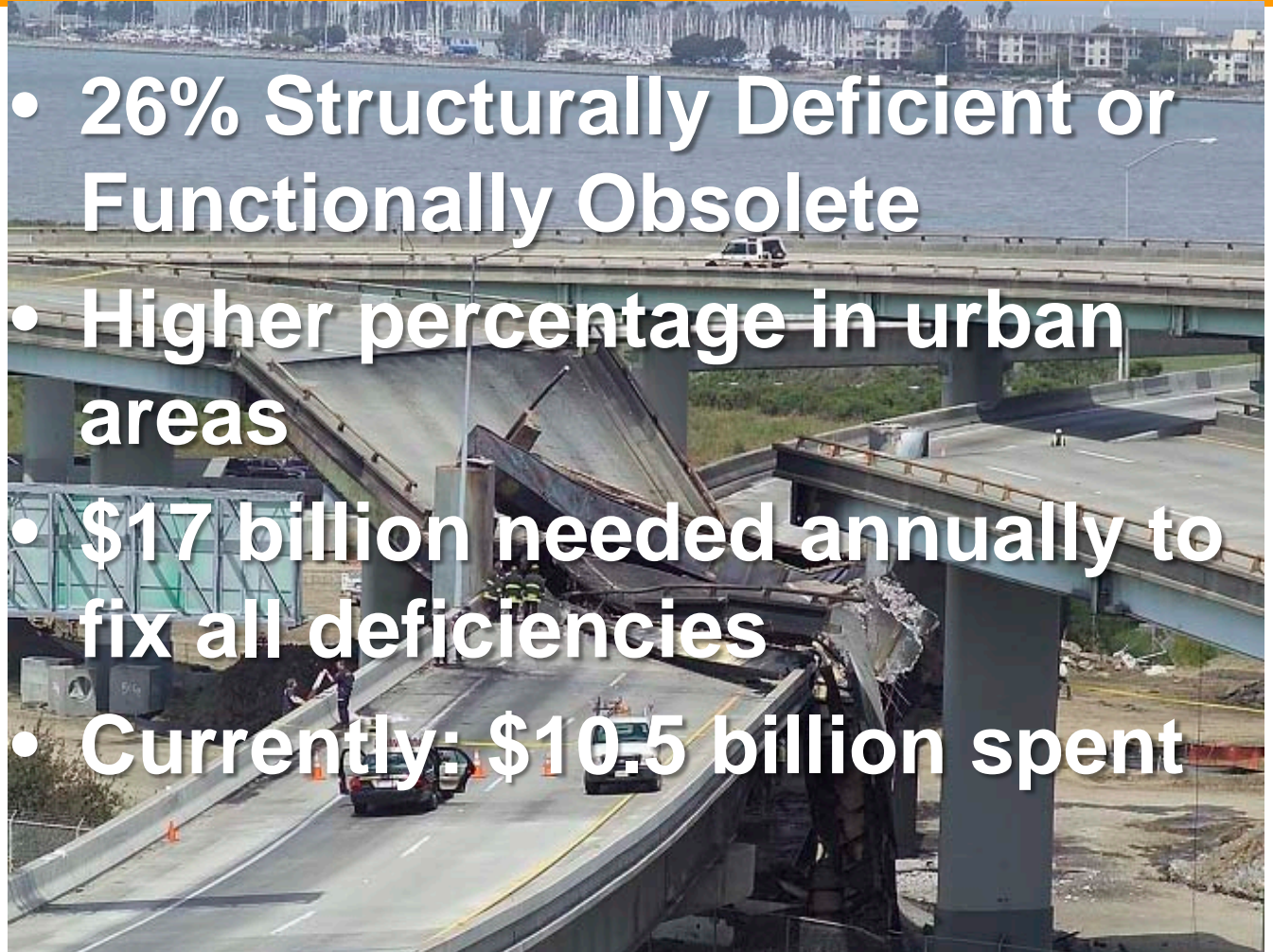
★★★★ for ★★★★★

AMERICA'S  
INFRASTRUCTURE

**ASCE**<sup>®</sup>  
American Society of Civil Engineers

# Bridges C

- 26% Structurally Deficient or Functionally Obsolete
- Higher percentage in urban areas
- \$17 billion needed annually to fix all deficiencies
- Currently: \$10.5 billion spent



2009  
REPORT  
CARD

★★★★ for ★★★★★

america's  
INFRASTRUCTURE

**ASCE**<sup>®</sup>  
American Society of Civil Engineers

## Inland Waterways D-

- Tow barge can carry freight equal to 870 tractor trailers
- Average age of the nation's locks: 60 years
- Cost to repair: \$125 billion



2009  
REPORT  
CARD

★★★★ for ★★★★★

america's  
INFRASTRUCTURE

**ASCE**<sup>®</sup>  
American Society of Civil Engineers

# Rail C-

- Freight and passenger rail share tracks in many areas
- Creates bottlenecks and slows goods movement
- \$200 billion investment through 2035 needed to meet demand



2009  
REPORT  
CARD

★★★★ for ★★★★★

america's  
INFRASTRUCTURE

---

# Roads

# D-

---

- Increased congestion costs \$78.2 billion to the economy, \$710 per motorist
- Current spending: \$70.3 billion
- Needed spending: \$186 billion

2009  
REPORT  
CARD

★★★★ for ★★★★★

america's  
INFRASTRUCTURE

**ASCE**<sup>®</sup>  
American Society of Civil Engineers

# Transit D

- Fastest growth, 25% since 1995, of any transportation category
- Only half of Americans have access
- Federal investment needs: \$21 billion a year
- Current investment: \$9.8 billion



---

# Parks and Recreation C-

---

- Parkland per capita is decreasing
- National Parks have a \$7 billion maintenance backlog
- Benefits of parks:
  - Generate \$730 billion to the economy
  - 6.5 million jobs
  - Clean air and water
  - Property values

---

# Schools D

---

- No conditions data since 1998
- Some investment increases in recent years
- Best estimate from the National Education Association: \$322 to improve conditions

2009

REPORT  
CARD

★★★★ for ★★★★★

americas  
INFRASTRUCTURE

2009  
REPORT  
CARD

★★★★ for ★★★★★

america's  
INFRASTRUCTURE

---

# Energy

# D+

---

- 2005 Grade: D (only grade improvement)
- Demand increased 25% since 1990
- Investment need by 2030: \$1.5 trillion
- Recent increases in investment, more expected over the coming years

# SE State Data: Bridge Condition

Percentage of Structurally Deficient or Functionally Obsolete bridges by state

• Alabama	26	• Mississippi	25
• Arkansas	25	• N. Carolina	30
• Florida	18	• S. Carolina	23
• Georgia	21	• Tennessee	21
• Kentucky	34	• Texas	22
• Louisiana	30	• Virginia	28
• Maryland	29	• West Virginia	39

# SE DATA: Road Conditions

Percentage of roads rated “poor” or “mediocre” condition

• Alabama	16	• Mississippi	40
• Arkansas	32	• N. Carolina	27
• Florida	13	• S. Carolina	28
• Georgia (no data)		• Tennessee	17
• Kentucky	19	• Texas	32
• Louisiana	44	• Virginia	23
• Maryland	44	• W. Virginia	37

# SE Data: Dam Safety

Total number of dams per state needing rehabilitation

- |                     |               |               |     |
|---------------------|---------------|---------------|-----|
| • Alabama (no data) | • Mississippi | 35            |     |
| • Arkansas          | 21            | • N. Carolina | 215 |
| • Florida           | 18            | • S. Carolina | 6   |
| • Georgia           | 21            | • Tennessee   | 6   |
| • Kentucky          | 34            | • Texas       | 103 |
| • Louisiana         | 30            | • Virginia    | 125 |
| • Maryland          | 37            | • W. Virginia | 30  |

---

# ASCE's Five Key Solutions

---

1. **Increase** state & federal leadership
2. **Promote** sustainability & resilience
3. **Develop** national, regional and state infrastructure plans
4. **Address** life-cycle costs
5. **Increase & improve** investment from all stakeholders

---

2009

REPORT  
CARD

★★★★ for ★★★★★

americas  
INFRASTRUCTURE

---

Questions?



---

# For More Information

---

Matthew Silveston, P.E.  
[msilveston@wpceng.com](mailto:msilveston@wpceng.com)

[www.asce.org/govrel](http://www.asce.org/govrel)  
[govwash@asce.org](mailto:govwash@asce.org)

202-789-7850

---