

**SEEKING GOOD GOVERNMENT,
ONE PROGRAM AT A TIME**

**KIRBY ARINDER
LINDA TRIPLETT
JULY 29, 2017**

PRESENTATION OVERVIEW

1. Mississippi's performance budgeting revitalization effort
2. The tools:
 - Seven Elements of Quality Program Design
 - *Measuring Mississippi* Performance Accountability Tool
3. Q & A

REVITALIZATION BACKGROUND

1. Mississippi Performance Budget and Strategic Planning Act of 1994
 - had some early success; but,
 - failed to take hold as a driver of state budget decisions
2. December 2012, Legislature partnered with Pew-MacArthur Results First Initiative
 - invest in programs and policies shown to work through high-quality research

REVITALIZATION BACKGROUND, CONT.

1. Public pressure to hold government accountable
 - Efficient
 - Effective
 - Transparent
2. Pressure on the state budget to achieve more with less
3. Ability to translate large quantities of data into actionable intelligence

3 KEY COMPONENTS OF REVITALIZATION

1. Development of **Statewide Strategic Plan**

- What are we trying to achieve?

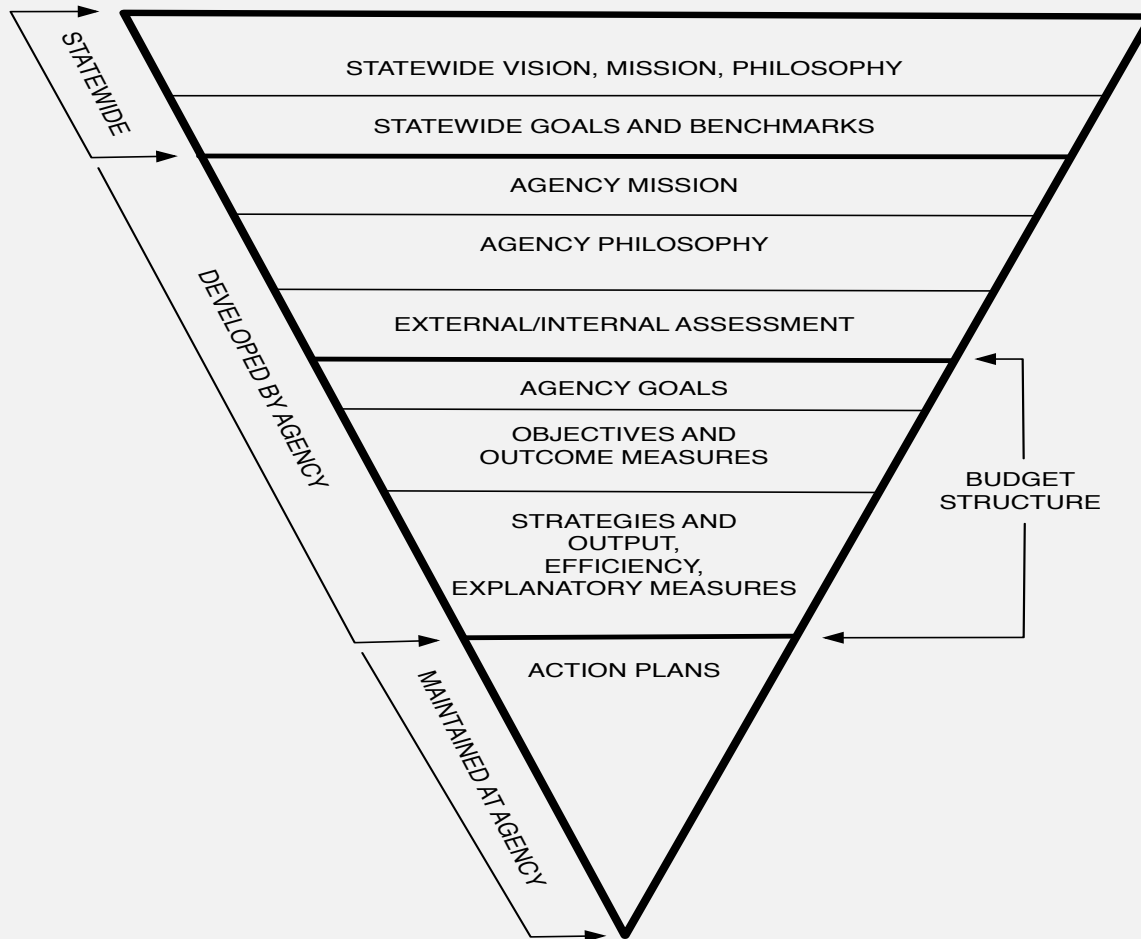
2. Creation of **Program Inventory**

- What are we doing and how are we performing?

3. Implementation of **Results First Initiative**

- Are we investing in programs shown to work through high-quality research?

STATEWIDE STRATEGIC PLAN



Building a Better Mississippi

The Statewide Strategic Plan for Performance and
Budgetary Success



July 2014

PROGRAM INVENTORY

- MISS. CODE ANN. Section 27-103-159 (H.B. 677, 2014 Regular Session), requires:
 - inventory of state agency programs and activities, beginning with 4 pilot agencies
 - identification of program performance indicators
 - incorporation of information from inventory into state budgeting and appropriations process

DEFINITION OF PROGRAM

- A set of activities designed to achieve a specific outcome or output
- Referred to as “accountability” program
- More detailed than “budget” units and programs

SCOPE OF PROGRAM INVENTORY

- Includes all programs provided by or funded through state government:
 - regardless of funding source
 - regardless of who carries out the program (state employees, contractors)

THE PEW-MACARTHUR RESULTS FIRST INITIATIVE

- Focus on “intervention” programs
- Provides participating states with:
 - a national database of intervention programs supported by high-quality research in several policy areas
 - access to a benefit-cost model that calculates intervention program ROI