

Restoration of the Mississippi Gulf Coast: Recovery from the Deepwater Horizon Spill



Presented by:

Richard Harrell, P.E., DEE

Mississippi Department of Environmental Quality

Progression of Stages

Incident

Response

Injury
Assessment

Restoration



Incident
April 20,
2010



The background of the slide is a close-up photograph of a chocolate chip cookie, showing the golden-brown texture and dark chocolate chips. The text is overlaid on this image.

Injury Assessment

Natural Resource Damage Assessment (NRDA)

NRDA is the legal process to determine the type and amount of restoration needed to compensate the public for harm to natural resources as a result of an oil spill.

Injury Assessment

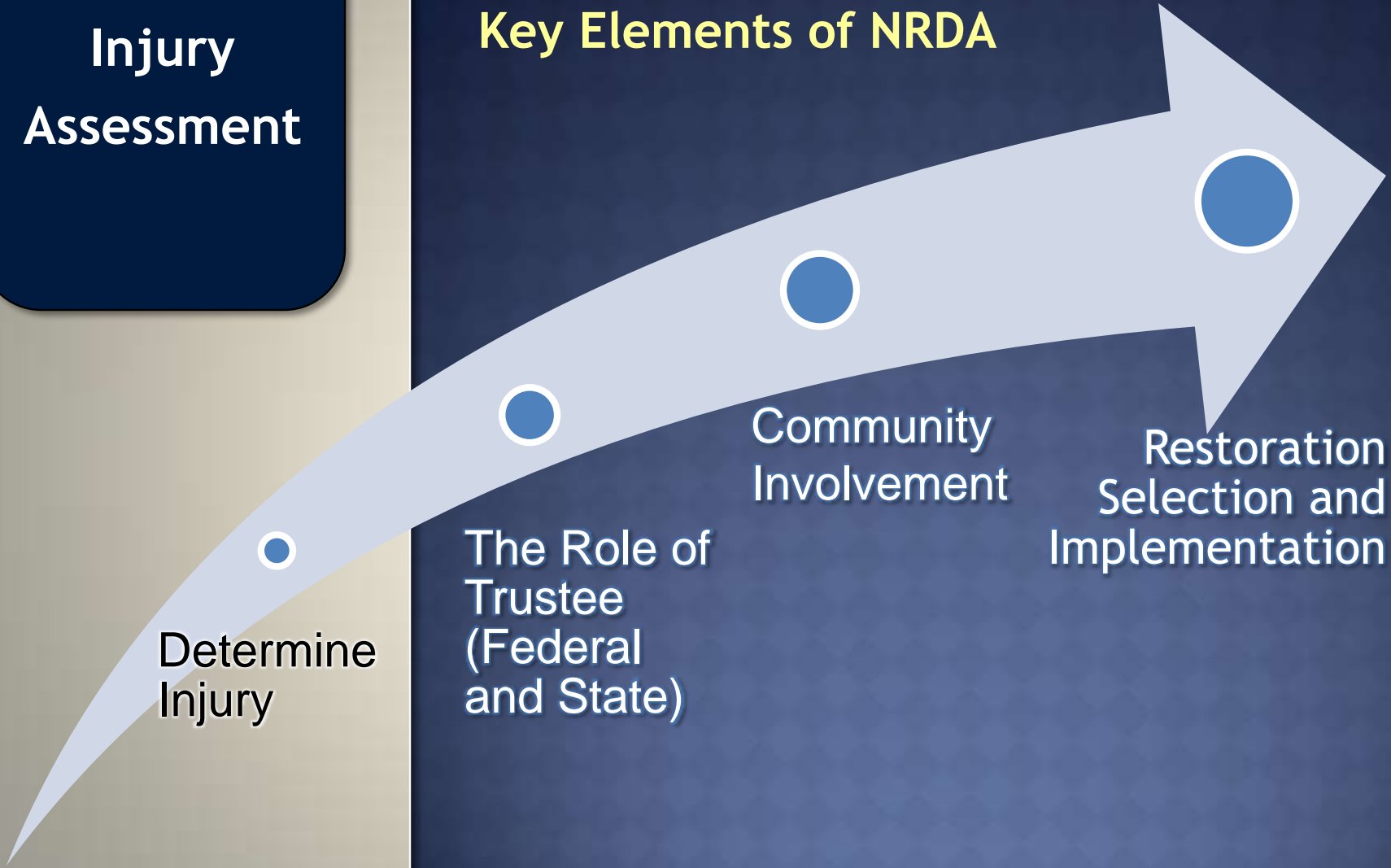
Key Elements of NRDA

Determine
Injury

The Role of
Trustee
(Federal
and State)

Community
Involvement

Restoration
Selection and
Implementation



Injury Assessment



Mississippi's Trustee
MDEQ - Lead Agency



State Trustees
(Trustee Steering Council)

Alabama
Florida
Louisiana
Mississippi
Texas

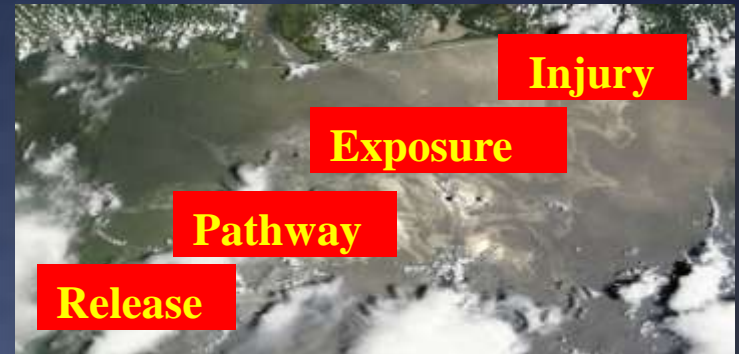


Federal Trustee
NOAA
DOI

Injury Assessment

Three Phases of NRDA

Preassessment
Phase



Restoration
Planning Phase

Restoration
Implementation
Phase



Injury Assessment

Assessment focuses on a wide range of natural resources. Technical Work Groups (TWG) have been established for the NRDA:

- Birds
- Fish and other Marine Life
- Marine Mammals and Sea Turtles
- Terrestrial and Aquatic Life
- Submerged Aquatic Vegetation
- Chemistry and Sampling
- Shoreline
- Water Column
- Human Use/Lost Recreational Use
- Data Management/GIS
- Aerial Imagery



All have implications for Mississippi wildlife and wildlife habitats.

TWGs

Injury
Identified

Data
Collection

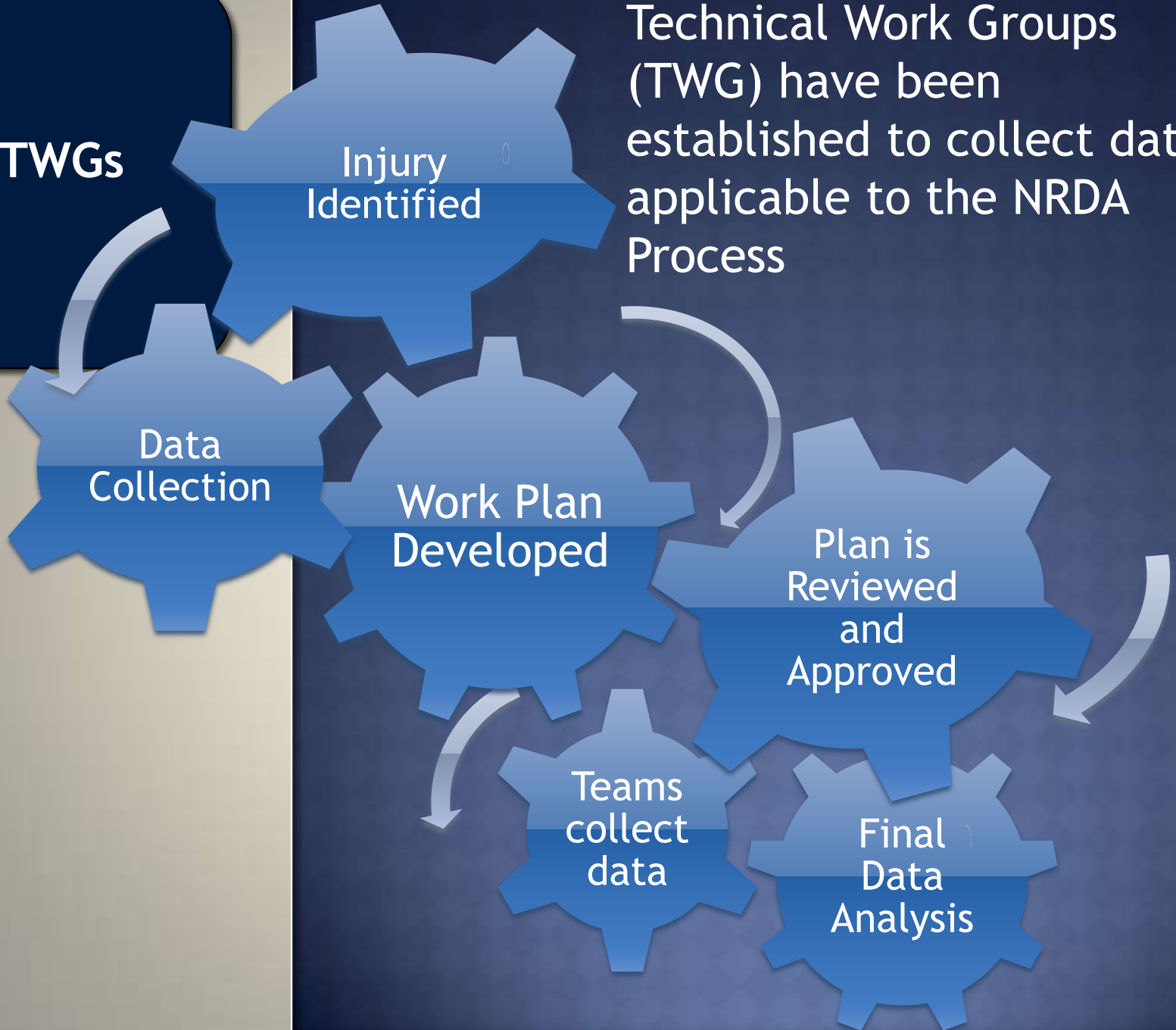
Work Plan
Developed

Plan is
Reviewed
and
Approved

Teams
collect
data

Final
Data
Analysis

Technical Work Groups (TWG) have been established to collect data applicable to the NRDA Process





Human Use TWG

The Human Use TWG is designed to capture and quantify the public's lost use of its resources

- Recreational fishing
- Recreational boating
- Shoreline use
- Other recreational uses

Restoration and Recovery

- Restoration Planning
- Identification of Projects
- Project Implementation



**Recovery
Resources**

NRDA

**Governor's
Commission**

**Making
Mississippi
"Whole"**

**Mabus
Report**

**Other
Initiatives**

Five Keys for Successful NRDA

Injury Assessment

- Focusing on Restoration
- Following the NRDA Legal Process
- Applying Relevant Science and Technology
- Developing a Common Vision and Coordinated Effort
- Get the Public Involved Early
- Realistic Expectations

Public Involvement

The Importance of Public Involvement

- Capturing our “use” losses
- Linking our vision for the Gulf Coast to restoration efforts
- Providing input into decision making





?? Questions ??



What Lies Behind Us and What Lies Before Us
are small matters compared to what lies within us.
- *Ralph Waldo Emerson*